

Rush Township

McDermott



Rush Township Schools

The early schools in Rush Township included Rushtown, Lower Duck Run (Owensville), Upper Duck Run (Hannah), McDermott, Lower Pond Creek, Upper Pond Creek, Kirkendall (Arnold?), and Dever Run (Doll). Pictures of the schools or locations of the schools are included along with a bit of history.

Rushtown School

Go to Rushtown Cemetery and find the pump. That's where the school was.

The Holiday Souvenir is from the Betty Jean Cox collection.





Rushtown School

Souvenir

Some teachers gave their students souvenirs at Christmas time or at the end of the school term. The following four slides show the souvenir given by Alma Yeager to her students in 1919.

Souvenir



*Holiday
Greetings*



Rushtown School

Rushtown School

A list of the pupils at Rushtown School.

Mabel Crabtree married Joe Keller.

*Charles McDaniel is Ron Cox's great great
uncle. (great grandfather's brother)*

Peter Brown's ancestors ran the mill.

Clark Waller ran the quarry.

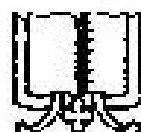
Frank Rickey is Branch's father.

Rushtown School

DISTRICT NO. 2

Rush Twp., Scioto Co., Ohio

December 25, 1919



Alma B. Yeager,

Teacher

School Board

Peter Brown Frank Rickey
Charles Nunley William Vandvort
Clark Waller

PUPILS

Merril Shively Charles McDaniel
 Jake Marsh
Clyde Cyrus Edgar Marsh
 Frank Marsh
Edgar Shively Cecil Lenegar
 Bodford Shively
Kenard Cyrus Vaughn Virgin
 Fred Nunley
George Suthers Kathryn Marsh
 Nellie Thomas
Martha Jane Virgin Lorain Shively
 Rachel Crabtree
Mildred Crabtree Rosa Thomas
 Helen Virgin
Mamie Cyrus Margaret Crabtree
 Beatrice Kirkendall
Agnes Cyrus Viola Throckmorton
 Thelma Nunley
Mabel Crabtree Blanche Nunley
 Grace McDaniel



Rushtown School 1930-1931

RUSHTOWN SCHOOL, 1930 or 1931

Back Row, L to R

Wells Vaughters, Russell Logan, John Wiget, Thelma Stephenson,
Mrs. Henry Hamer, Helen Kirkendall, Ruth Wiget, Jesse Free,
Albert Carver, Archie Wilson, George Eichenlaub.

Second Row, L to R.

Wells Kirkendall, Eileen Smalley, Pauline Smalley, Ruth McClary,
Eileen Kirkendall, Maxine McDaniel, Annalou Crabtree, Stella Adkins,
Nancy Eichenlaub, Mary Logan, _____, Louise Logan, Rosie
Eichenlaub, Zelma Kirkendall.

Front Row, L to R

Buz Strickland, William Thompson, Gerald Kirkendall, Adrian Kirkendall,
Chester Wilson, Clifton Kirkendall, Joseph M. Peebles, Junior
Kirkendall, Francis Stephenson, J.W. Crabtree, John Logan.

The Arnold School

- From Evans page 401
- A suspension foot bridge constructed across Brush Creek near the Arnold School House for school purposes in 1884 at an expense of \$495.
- James M. Russell was the contractor.
- The bridge was 312 feet long and 4 feet wide

Bridge

The first suspension bridge was built over Brush Creek at the Arnold School House (later Dave Young Place) for school children use in 1884. Mike & Bill McDermott bought land in 1897.

From Scioto County & Pioneer Record of Southern Ohio

See Map Number 18



Dave Young Farm

George Arnold Farm

Amos Kirkendall owned
land at Duck Run
and the Pike.

Residents

Robert and Rosemary (VanKirk) Crabtree lived here. Rosemary remembers that the doors had transom windows. Normal for a school but not for a home.









The Kirkendall School
and the
The Arnold School
are in the same locale.
Kirkendall may have opened
after Arnold closed.



Kirkendall School

Kirkendall School was on McDermott Pike on the Mose Shope farm at the foot of Burgraff Hill. The Beacon of Hope Church is on the property now.





Kirkendall School



Beacon of Hope Church

Dever Run School

The creek that runs down SR 348 hill toward Lucasville is Dever Run. Dever Run School was at the bottom of the hill on the south side. (The foot of Low Gap Hill). The building was moved to the Doll Farm in the 20's, and became known as the Doll Schoolhouse.

Dever Run School - Before 1900





Foot of Low Gap



Foot
Of
Low Gap

Moved

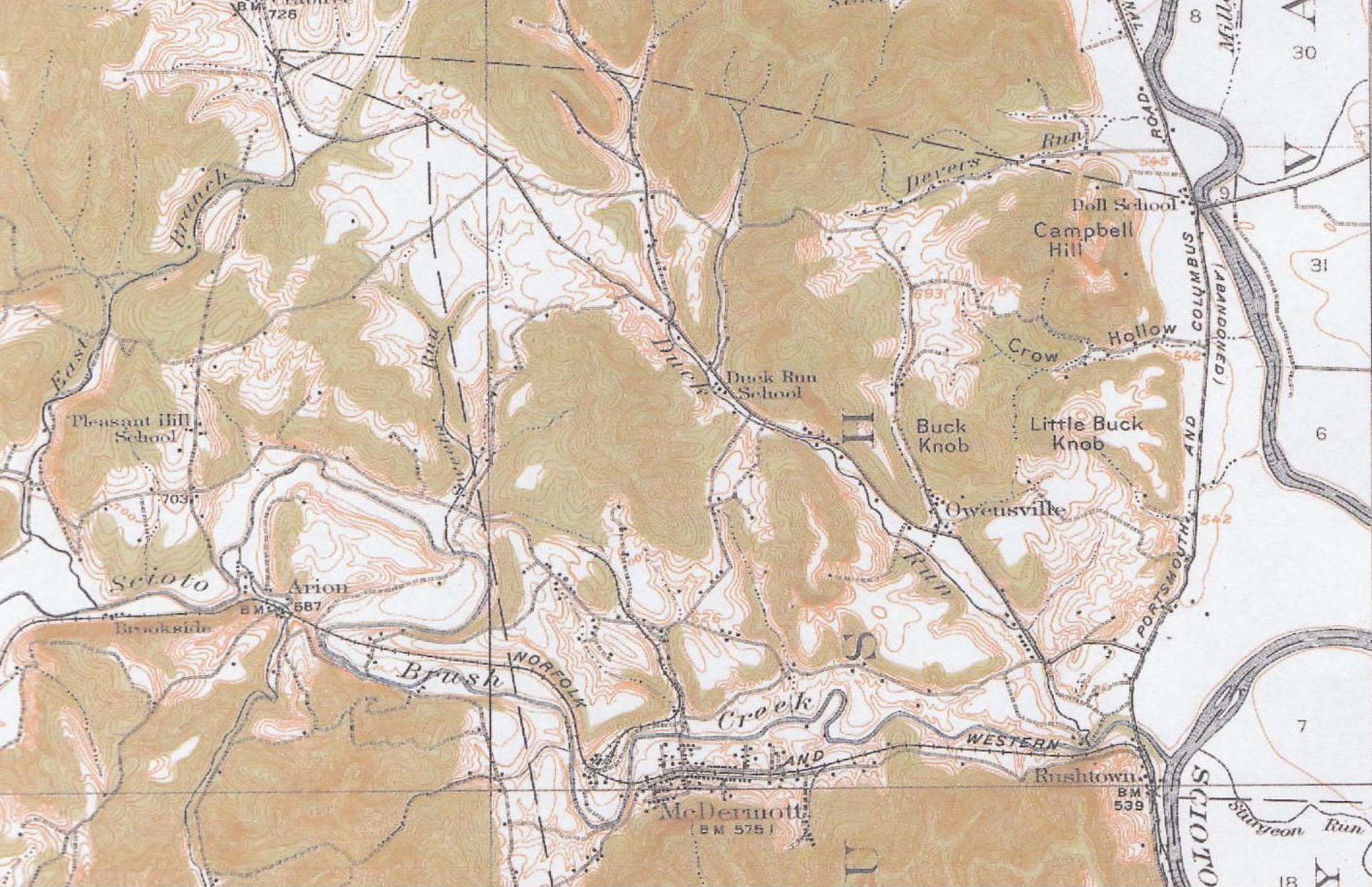
The building was moved because more people lived near the river and on Crowe Hollow than on Dever Run. Dever Run at the time was a dead-end road. When the building was moved, Rush Township and Valley Township agreed that the children would attend Valley Schools. (They still do.)

Lucasville to Otway

- Go up Dever Run to Owensville Road
- Down Owensville Road to Duck Run
- Still called Duck Run – Otway Road
- Became SR 348
- On to Otway
- Low Gap was cut in the 40's (WPA)

Doll Schoolhouse

The School was on the Doll farm south on SR 104 about where the old Scioto River Bridge was. The piers are still in the river. The school was on the west side of SR 104





Doll School

Elmer Inively- Teacher

Ruth M^cGeorge

Otto Traskier

Orel Meadows

Charles M^cGeorge

Henry Russell

Eugene Russell

Charles Russell

Watson Wheeler →

Francis Lundy

Pauline Stout

Sadie Lundy

Helen Doll

Goldie Heldebride

Dorothy Barber

Conley

Helen Stout ✓

School Pictures

Doll Schoolhouse

Madge Meadows

Opal Sparks

Nell Barber

Eva Lundy

Conley

Ollie Meadows

Norman Harness

Vorse Lundy

Dudley Barber

Leman Wheeler

Armin Doll ✱

Cecil Meadows

Artis Conley

Doll School Names

Owners and Residents

Ken Long bought it from the township.

His niece Bea Long lived there

with her 3 nieces

Pat Altenburg

Louise Benner

Norma Nell Rockwell



Doll School – copied from the Lucasville Sesquicentennial Book



Doll Schoolhouse in 1980



Doll School at 10651 SR 104



Doll School in 2008

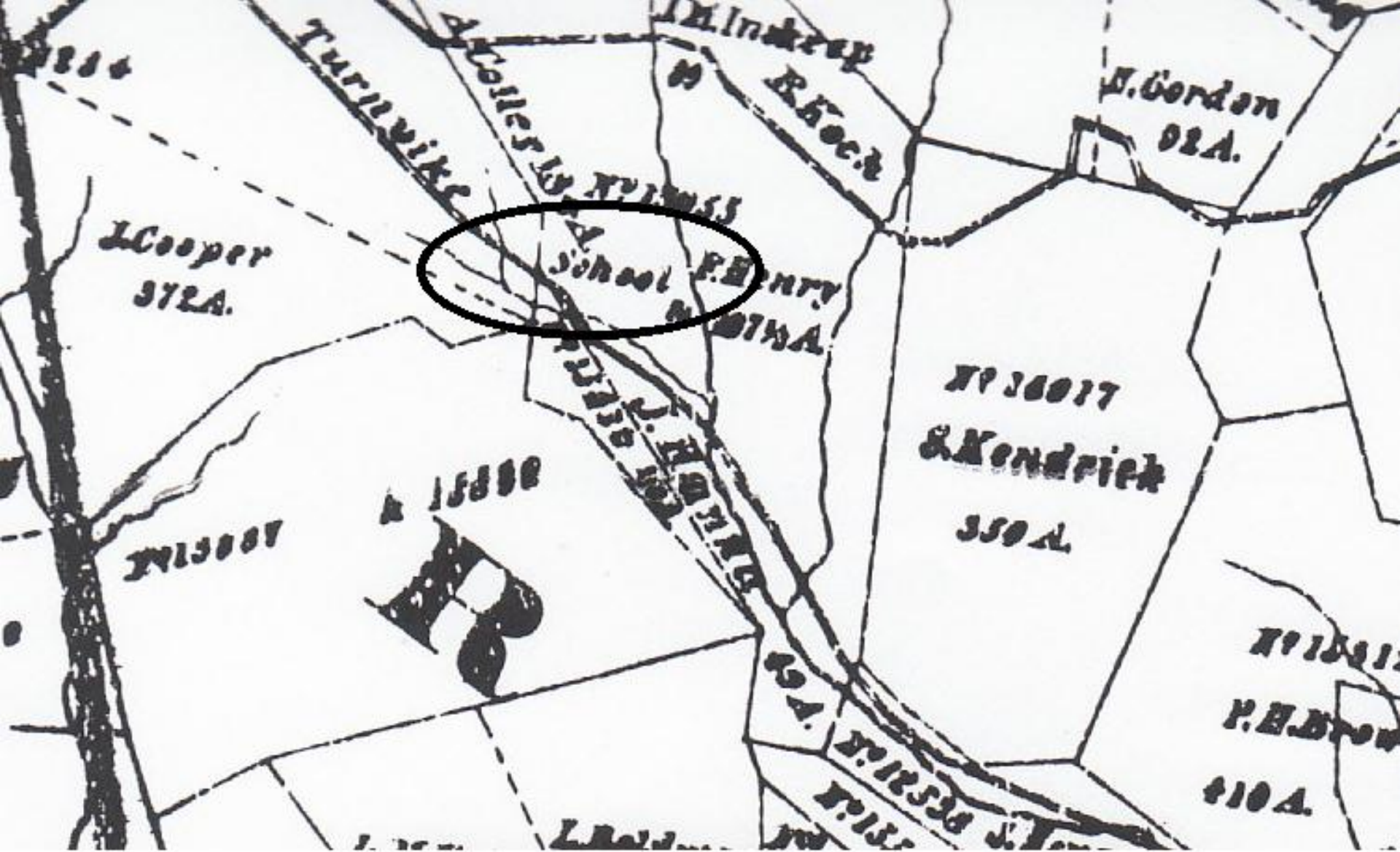
Hanna

There is mention of a
Hanna Post Office and Hanna School.
It was at what is now 264
Inskeep Road.

Hubert Crabtree







Hanna School

Hubert Crabtree

The Hanna School was not moved
it was sold.

Clell Hiles lived there for awhile,
then his dad
then a family named Hall.

The Duck Run School was built new.

Hubert Crabtree

I was born in 1920.

Started school in 1926.

I remember walking out of Inskeep with Norman Crabtree, Leonard Slye, Strother Hiles and the DeLong boys – Ellis & Riley.

I went to school 1 year in the frame building
5 years in the brick building
and then to McDermott.

Location

The brick school opened in the fall of 1927

The pictures dated before that

(1925 & 1927)

are at the Duck Run frame school.



**This is the Chester Goodwin Home on Duck Run.
It was built as a Hotel by The Henry Family.
The water supply was the Henry Springs.
The building was used as a school for a short time**

Upper Duck Run

Nellie DeLong Hiles says the original wood frame school was 10 or 20 yards straight back from the cistern. Roy Rogers attended school in this building. The building in the background of the following class pictures is probably the school. Nellie was in the first first grade in 1927 – her daughter Sharon was in the last first grade in 1952.



The original school was beyond the cistern in the foreground.

Upper Duck Run in the 20's

The following three pictures are hanging in the old school building, now used by the Rush Free Baptist Church. The handwritten names of the children follow and then the names are typed. Have fun figuring out which row is which.



1- 6 Copies Duck Run #723
(One room School)

Back Row - Belle Allen, Jennie Sly, Estu Allen,
Hollie Hall — Hall, Sarah Ellen Crattree, Ruth
Crattree, Hazel McFann, Louise Shelpman,
~~Estu~~ Esther Smalley, Mildred Noel, Pearl Allen

Next Row - Beecher Henry, Bob Shelpman, Anna Crattree
'Shorty' Noel, Paul Lute, Mary Hiles, Anna Colley,
Kathleen Slye,
Row ~~sitting~~ setting on a seat -

Catherine Allen, Geneva Colley, Audrey William
Evelyn Williams, Audrey Noel, Mildred ~~as~~
~~as~~ Abshie, Garland Langdon.

Next Row:

Fred Mathews, Streanther Hiles, Pete Allen,
~~Otho~~ Otho Porter, Pete Colley, Amel Porter
Roy Rogers, Charles Hiles, Forrest Norman,
Raymond Hiles, Fred Shelpman, Riley Ellis
De Long, Ray Boldman, Francis Crattree
Hubert Crattree, George Williams — Lute

Upper Duck Run – 1925

Back Row: Belle Allen, Jennie Slye, Esta Allen, Hollie Hall, _____ Hall,
Sarah Ellen Crabtree, Ruth Crabtree, Hazel McFann, Louise
Shelpman, Esther Smalley, Mildred Noel, Pearl Allen,

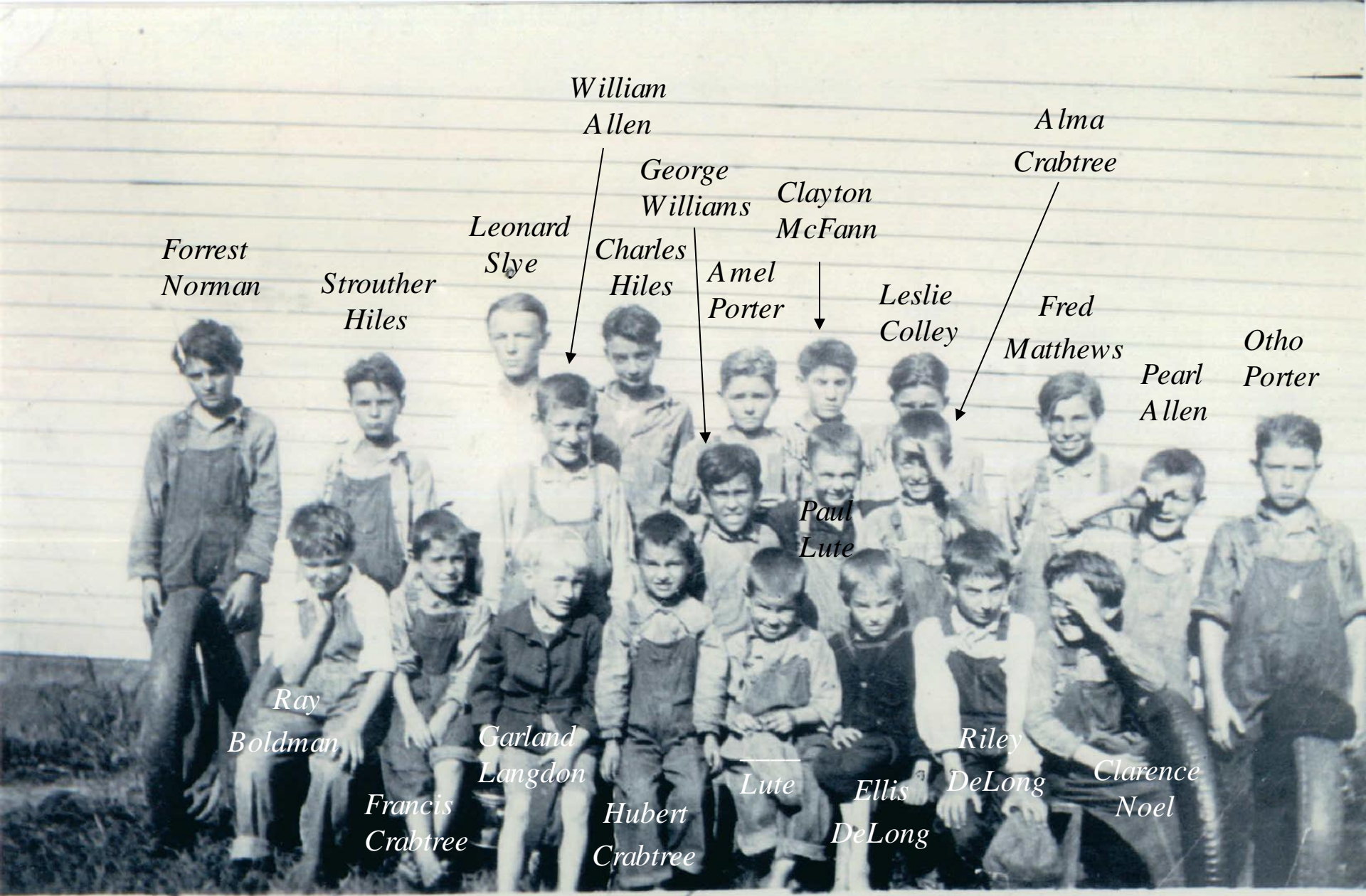
Next Row: Beecher Henry, Bob Shelpman, Alma Crabtree, Shorty
Noel, Paul Lute, Mary Hiles, Anna Colley, Kathleen Slye

Sitting on a seat: Catherine Allen, Geneva Colley, Audrey Williams,
Evelyn Williams, Audrey Noel, Mildred Abshire, Garland Langdon

Next Row: Fred Matthews, Strouther Hiles, Pete Allen, Otho Porter,
Pete Colley, Amel Porter, Roy Rogers, Charles Hiles, Forest
Norman, Raymond Hiles, Fred Shelpman, Riley DeLong, Ellis
DeLong, Ray Boldman, Francis Crabtree, Hubert Crabtree, George
Williams , _____ Lute



Duck Run - Long - 190



Forrest
Norman

Strouther
Hiles

Leonard
Slye

William
Allen

George
Williams

Charles
Hiles

Clayton
McFann

Alma
Crabtree

Leslie
Colley

Fred
Matthews

Pearl
Allen

Otho
Porter

Paul
Lute

Ray
Boldman

Francis
Crabtree

Garland
Langdon

Hubert
Crabtree

Lute

Ellis
DeLong

Riley
DeLong

Clarence
Noel

Duck Run - Long - 190

250
10.00

(5) 6 Copies

Suck Run - Long Ago ¹⁹⁸²
1927

Back Row - Forrest Norman, Strauther Siles,
Leonard Siles, Charles Siles, Amel Porter
Clayton McFann, Leslie Colley, Fred Matlock

Middle Row - (Pete) Williamson Allen, ~~George~~ George
Stillman, Paul Lute, Alma Crabtree
Pearl Allen, Otto Porter

Front Row - Ray Boldman, Francis Crabtree, Garbo
Langdon, Hubert Crabtree — Lute,
Ellis DeLong, Relay DeLong, (Shorty)
Clarence Noel

Upper Duck Run – 1926?

Back Row: Forest Norman, Strouther Hiles, Leonard Slye, Charles Hiles, Amel Porter, Clayton McFann. Leslie Colley, Fred Matthews

Middle Row: (Pete) William Allen, George Williams, Paul Lute, Alma Crabtree, Pearl Allen, Otho Porter

Front Row: Ray Boldman, Francis Crabtree, Garland Langdon, Hubert Crabtree, _____ Lute, Ellis DeLong, Riley DeLong, (Shorty) Clarence Noel



Duck Run - 1927

In the Window – L-R Forest Norman, Roy Rogers, Charles Hiles

Marion
Hiles

Bernard
Crabtree

Hubert
Crabtree

Frank
Hiles

Harold
Boldman

Mildred
Abshire

Norman
Crabtree

Ray
Boldman

Fred
Shelpman

Riley
DeLong

Francis
Crabtree

Ellis
DeLong

Charlene
Shelpman

Geneva
Colley

Audrey
Guilkey

Katherine
Allen

Evelyn
Cox

Irene
Rose

Duck Run - 1927

2-1927

 Picture

Back Left to right.

~~Harold Boldman~~

Mildred Abshire

Norman Crabtree

Ray Boldman

Fred Shelpman

Riley Delong

~~Hubert Crabtree~~
Francis

Middle Row.

Harold Boldman

Ellis Delong.

Marion Hiles

Bernard Crabtree

~~Hubert Crabtree~~

Frank Hiles

Front Row.

Charlene Shelpman

Geneva Colley

Audrey Guilkey

Kathrine Allen

Evelyn Cox

Irene Rose

Upper Duck Run - 1927

**Back Row: Mildred Abshire, Norman Crabtree,
Ray Boldman, Fred Shelpman, Riley Delong,
Francis Crabtree**

**Middle Row: Harold Boldman, Ellis DeLong,
Marion Hiles, Bernard Crabtree, Hubert
Crabtree, Frank Hiles**

**Front Row: Charlene Shelpman, Geneva
Colley, Audrey Guilkey, Katherine Allen,
Evelyn Cox, Irene Rose**

**In the window: Forest Norman, Roy Rogers,
Charles Hiles**

Upper Duck Run

Upper Duck Run was opened in 1927 and closed as a school in 1952. Ted Strickland attended school here. The Rush Free Baptist Church now owns the building.

Pat Boldman Lynn started school here. After about a month the school was closed and the children were taken to McDermott.

**Duck Run School
Rush Free Baptist Church**



Upper Duck Run



FREE
ST

FREE
ST





No School Today – Snow! – Date Unknown

Lower Duck Run

The picture shows a cistern in the foreground. Stumpy Copp said the cistern supplied the water for the school which was about where the brush pile is. Also known as Owensville.







Lower Pond Creek

Lower Pond Creek was on SR 73 across from Flowers 'N' More. The building was razed and burned in the fall of 2002. The address would be about 19260 SR 73.





Lower Pond Creek
Windows have been added.

Lower Pond Creek

All the Joe Orlett children – Mary, Joseph, Annie, John, Teresa, and Tony went to school here.



Mary Orlett - maybe
Lower Pond Creek - 1904



Danny Montavon remembers a pump inside the building Gary McClary was the last person to live here.



Lower Pond Creek – Gone!

In mid-August 2002 Cynthia Matthews, who owns the farm with her sister FiFi, hired Dennis Crabtree to dig a hole, knock the schoolhouse down, shove it into the hole, burn it, and cover it up. This was done to the school, Duckwall's Tavern, and McGraw's Farmhouse along SR 73.



Lower Pond Creek - 2002

Upper Pond Creek

Upper Pond Creek in Rush was on SR 73 between Victor Cremeans driveway and Dick Daniel's bridge. Rita Prose Montavon, who went to school there, says the rock in the foreground might mark the cistern that was the water supply for the school. If so, this is a picture of a bridge deck that had been over Jacquays Run and the school was in the foreground.



Upper Pond Creek in Rush



Victor Cremeans house – school was to the right



March 30, 1891

Upper Pond Creek - March 1, 1895



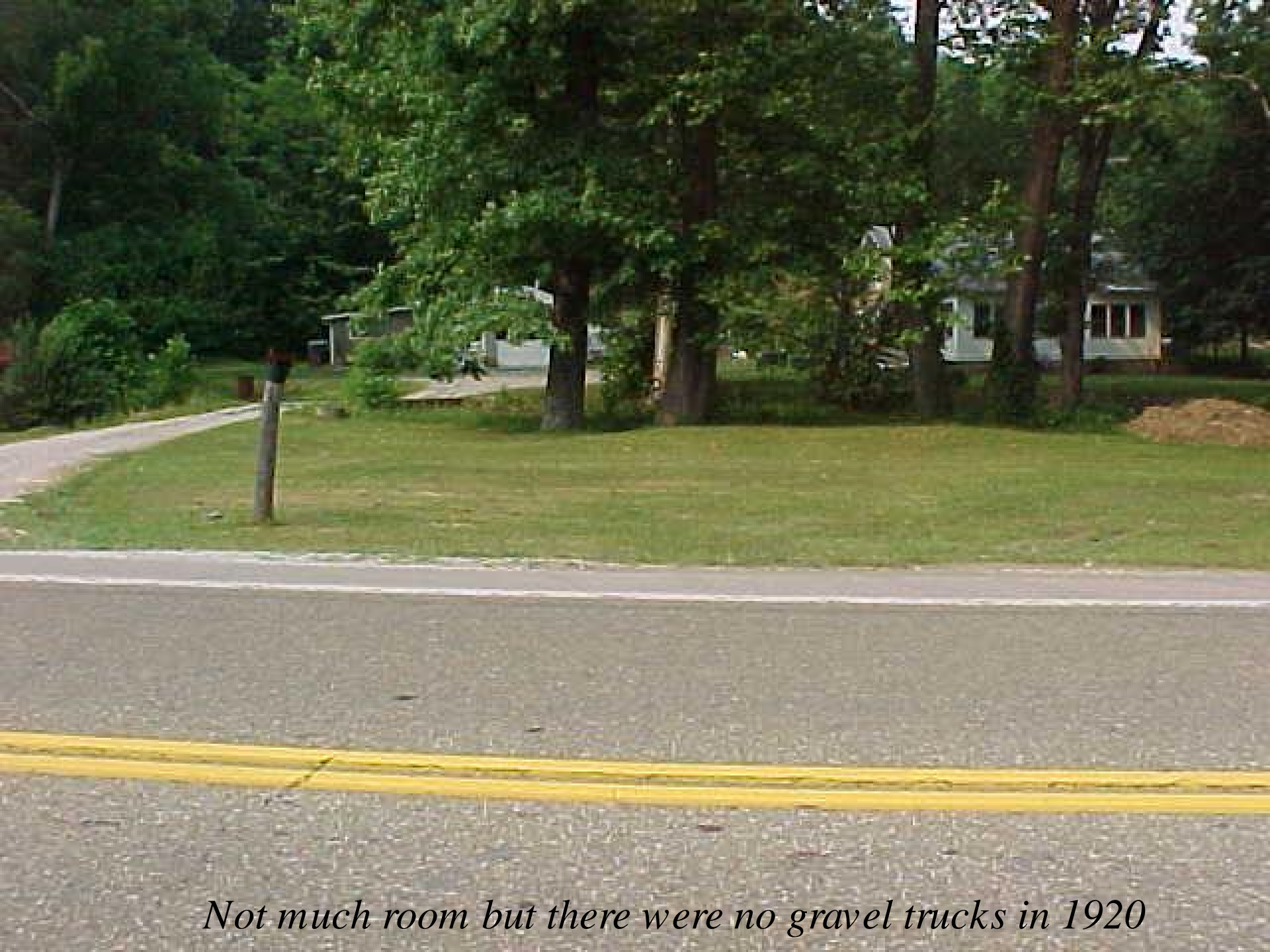
Students at Upper Pond Creek

The older Montavon children – Francis, Vincent, Rita (Dobbins), Marie (Redoutey), Edwin, Alberta (Brown), Virginia (McCall), and Genevieve (Burchett) went to school here.

The older Prose children Paul, Rita (Montavon), Charles, and Edward attended school here. Jovita (McBroom), went to the new school at Union.

Upper Pond Creek

Genevieve Montavon Burchett was born in 1933. She started school at age six in the fall of 1939. There were two children in the first grade. Genevieve Montavon and William Delaney. That was the last year the school operated. When the school ceased to operate the building and land reverted to (or was bought by) the original landowners – the Montavons. Albert was living on the Montavon farm so he gained control of the property. He tore it down in the forties and some of the lumber was probably used somewhere on the farm. Ask Abby. The building was in the open area between Daniel's bridge and Cremeans' driveway.



Not much room but there were no gravel trucks in 1920

McDermott Village

- 1910 Two Room - burned
- Cherry Street
- Maple Street
- Two Room – Ten Windows
- 1912 Stone
- 1923 Addition
- 1935 High School
- 1935 close all except Duck Run
- 1952 Primary

School House Is Destroyed

Another disastrous fire occurred in this county early Thursday morning when the two room frame school house located in the heart of McDermott, caught fire from a defective flue and burned to the ground. Nothing of the contents was saved.

The building was valued at \$2000 while the furniture and desks and equipment in the school are estimated at from \$300 to \$500. Not a cent of insurance was carried on the building or contents.

Residents of McDermott were aroused from their slumbers about three o'clock Thursday morning to find the village school house a mass of roaring flames.

When discovered the building was so far gone that no attempt was made to fight the fire and before the eyes of the astonished inhabitants within a short space of time the building and its contents were completely destroyed, entailing a loss of \$2500.

Every piece of furniture and the desks in the building, also all of the books were included in the loss.

The fire was discovered about 2:45 by the train crew of freight No. 93 on the N. & W. With an incessant toot of the whistle on the engine the crew woke up the inhabitants of the village only to find that the warning was too late to save the building.

The fire is supposed to have originated from a defective flue connected with the furnace. Both of the rooms in the building were heated by a hot air furnace in the basement attended by the teachers, Mrs. Mary Waller and Miss Grace Schoonover.

Shortly after school had been dismissed or about 4:30 Wednesday evening the teachers closed and locked the building, leaving a small fire, as was their custom, burning in the furnace.

With no one to molest it the small blaze from the defective flue evidently spread until it was given impetus by a strong draught of air. Fanned by the high winds which blew all night the one story frame building containing two rooms was soon a furnace of flames which did not subside until the entire structure had been consumed.

An addition of one room had only recently been completed by Jos. Steagal, contractor, of Portsmouth. The entire building was remodeled and renovated and converted into an ideal little school house. Over 80 pupils were accommodated in it all of whom will be thrown out of a chance to acquire knowledge for a time, there being no vacant rooms at the present time available in McDermott. At least none adaptable for school room purposes.

One fortunate circumstance connected with the conflagration was that the building was so isolated from the remainder of the buildings in the village that none of them took fire. Had this occurred with no fire protection and the high wind there is no telling what the results would have been.

to
id
er

}}

1

\$700 Insurance

A member of the board of school trustees at McDermott, stated Friday that \$700 insurance was carried on the old building. When the new addition was erected no additional insurance was taken out, consequently the loss will be pretty heavy.

So far no location has been secured for the homeless pupils. A meeting of the board of trustees will necessarily have to be called to select a location for the pupils. Several available rooms are being taken under consideration by the trustees. Moatz hall and the church auditorium. It is expected by the trustees to call a meeting for to-night to take decisive action on the matter.

Nothing will be done towards the erection of a new building until spring.

The loss was complete and it will require a considerable amount of money to rebuild. And when they do the building will likely be fire proof and enlarged so that the growing population of the little village can be handled in the future. There are now about 80 pupils enrolled in the school, all of whom have been deprived of a home, as the result of the fire.

Are After The Church

As a result of the school building at McDermott burning down Thursday morning, the school populace of the village is temporarily without a home. An attempt is being made to secure the church or the hall over Moatz's store in which to instruct the pupils. In all probability the church auditorium will be secured as new quarters for the students.

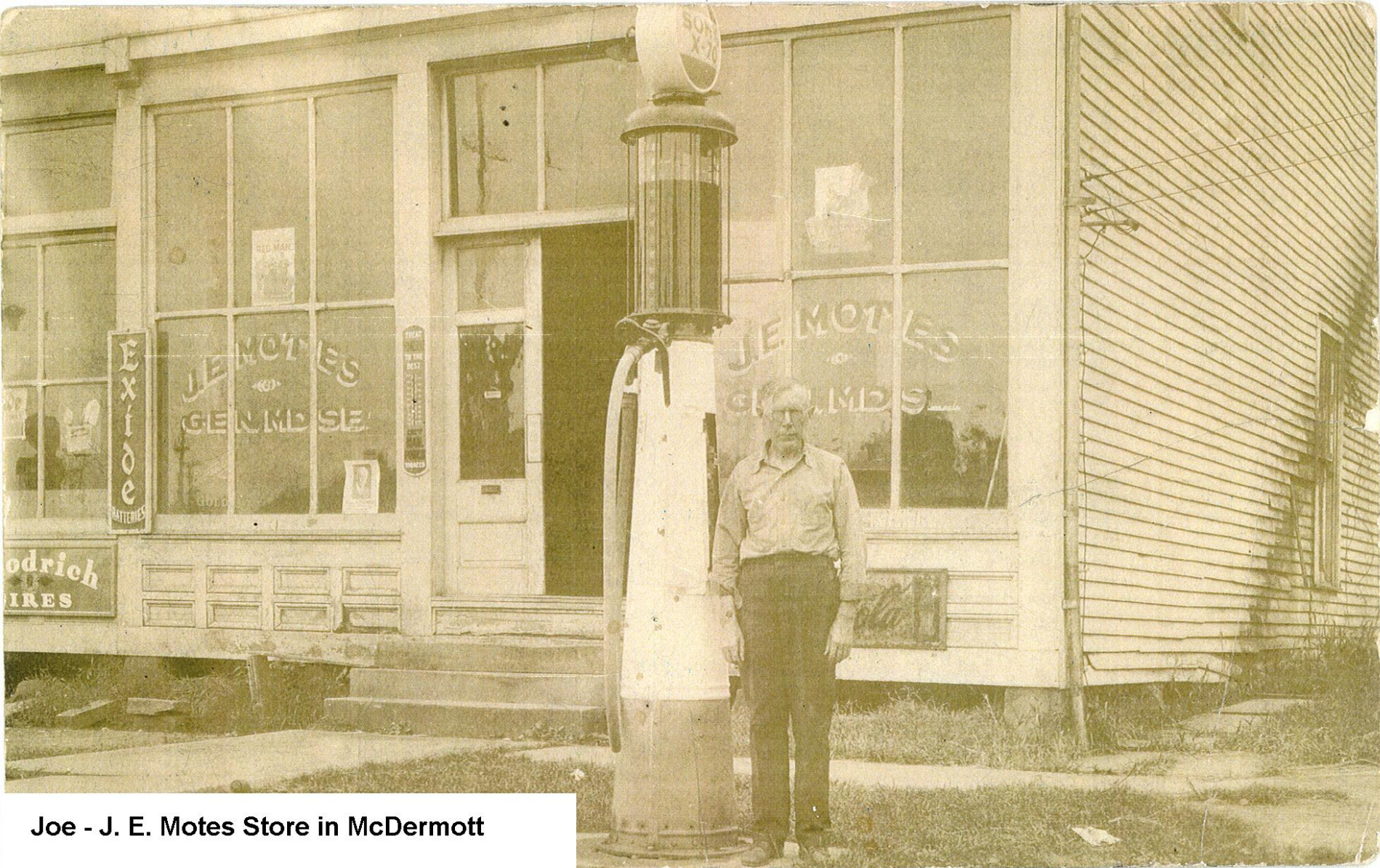
SCHOOL OPENED

School was commenced at Mc Dermott Monday. The classes were divided up, part of them finding accommodation in the hall of the Junior Order of Mechanics and the other part in the auditorium of the church.

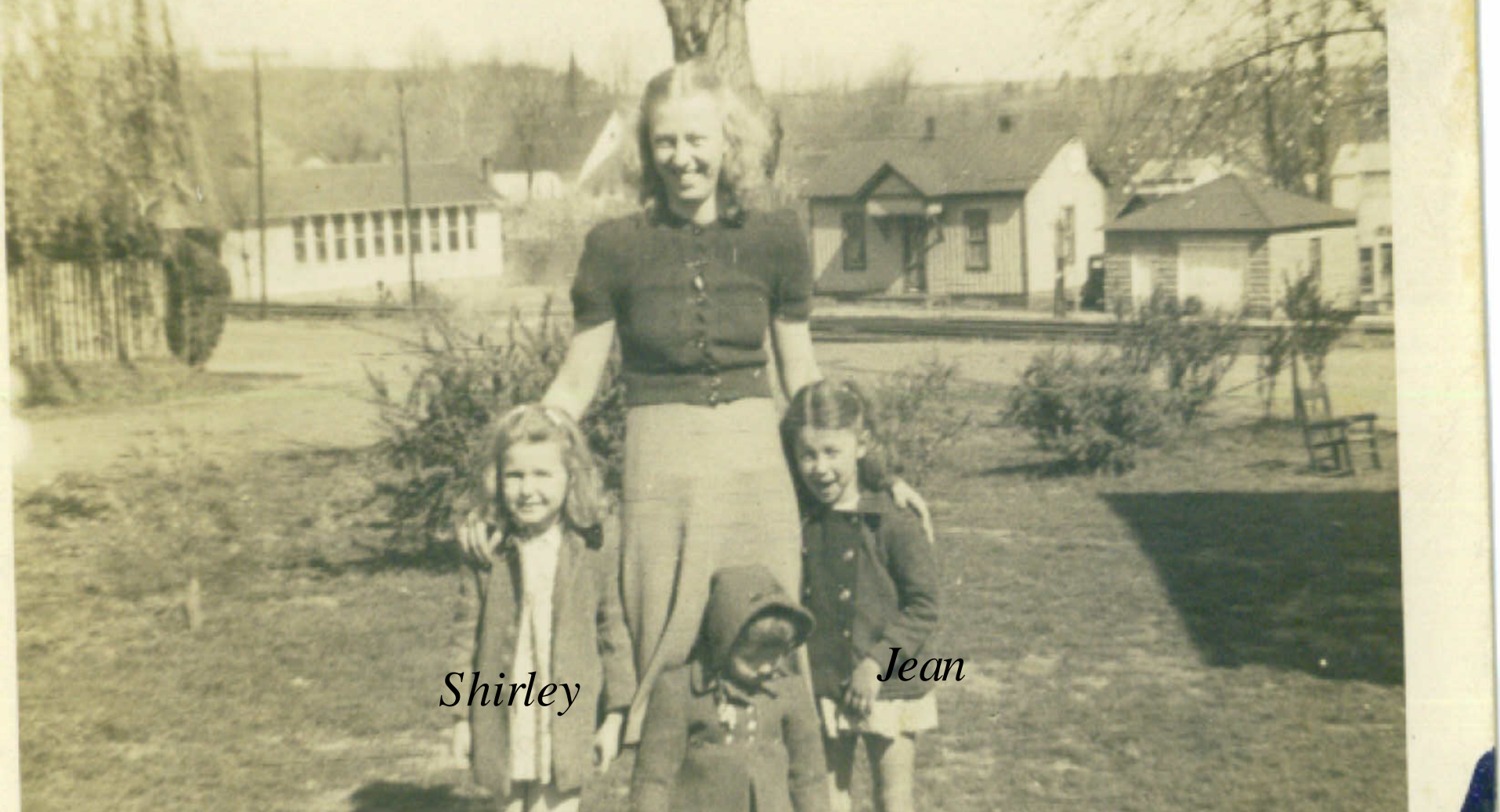
No arrangements to rebuild the school will be made until spring. Several insurance adjusters are at work and expect to make a satisfactory settlement with the trustees.

Location

- We believe this building was on the same location as the 1912 building. The children attended school in the Church (Baptist) and the lodge hall (Motes?) and the town hall until the new school opened in 1912.



Joe - J. E. Motes Store in McDermott



Shirley

Jean

This is Thelma Ballengee Koch with Shirley Colvin and daughter Jean. Bonnie Parsley Emmons in in the middle. The building in the background with the 10 windows was the school. At the time of this picture it' s Denver Duncan' s storage building. The other building in the background is the railway section foreman' s house

Old McDermott

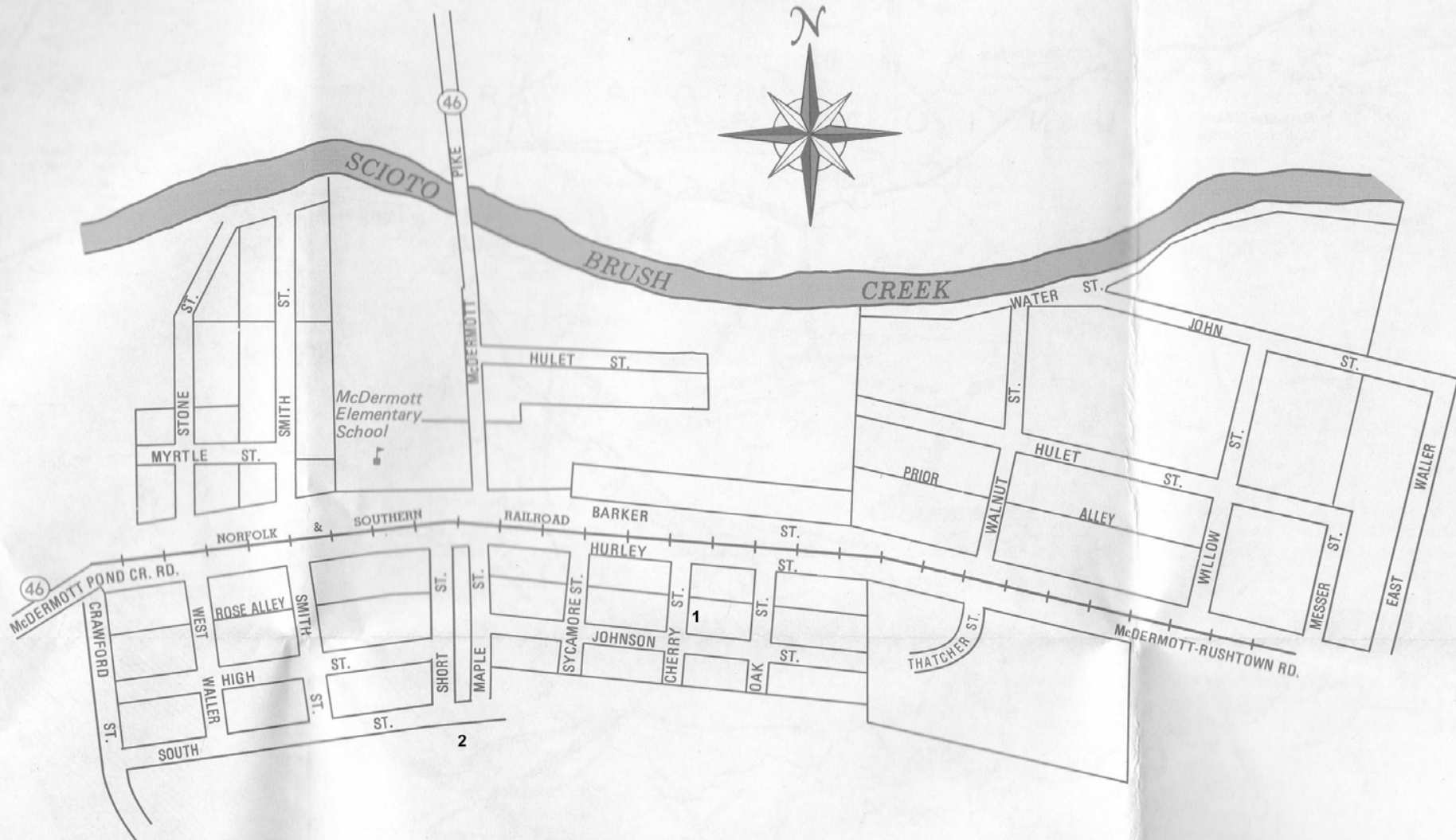
The 10 window school stood on the baseball field behind the 1936 building. It was a “two-roomer”. Denver (Dube) Duncan ran a store in McDermott where the store building is now. The 1912 building was enlarged in 1923. Sometime after this Duncan moved the school to a location behind the store and used it to store feed. Later the building was taken apart and the lumber used to build a “blacksmith shop” on the Duncan farm at Mt. Joy. The children then attended school in the enlarged 1912 building. Bob Gardner recalls that the 10 window building was later used for Manual Training.



McDermott Store



Carl South says the metal barn is on the same location as a wooden barn. The trailer marks the location of the “ blacksmith shop” . Both buildings blew down in a windstorm.



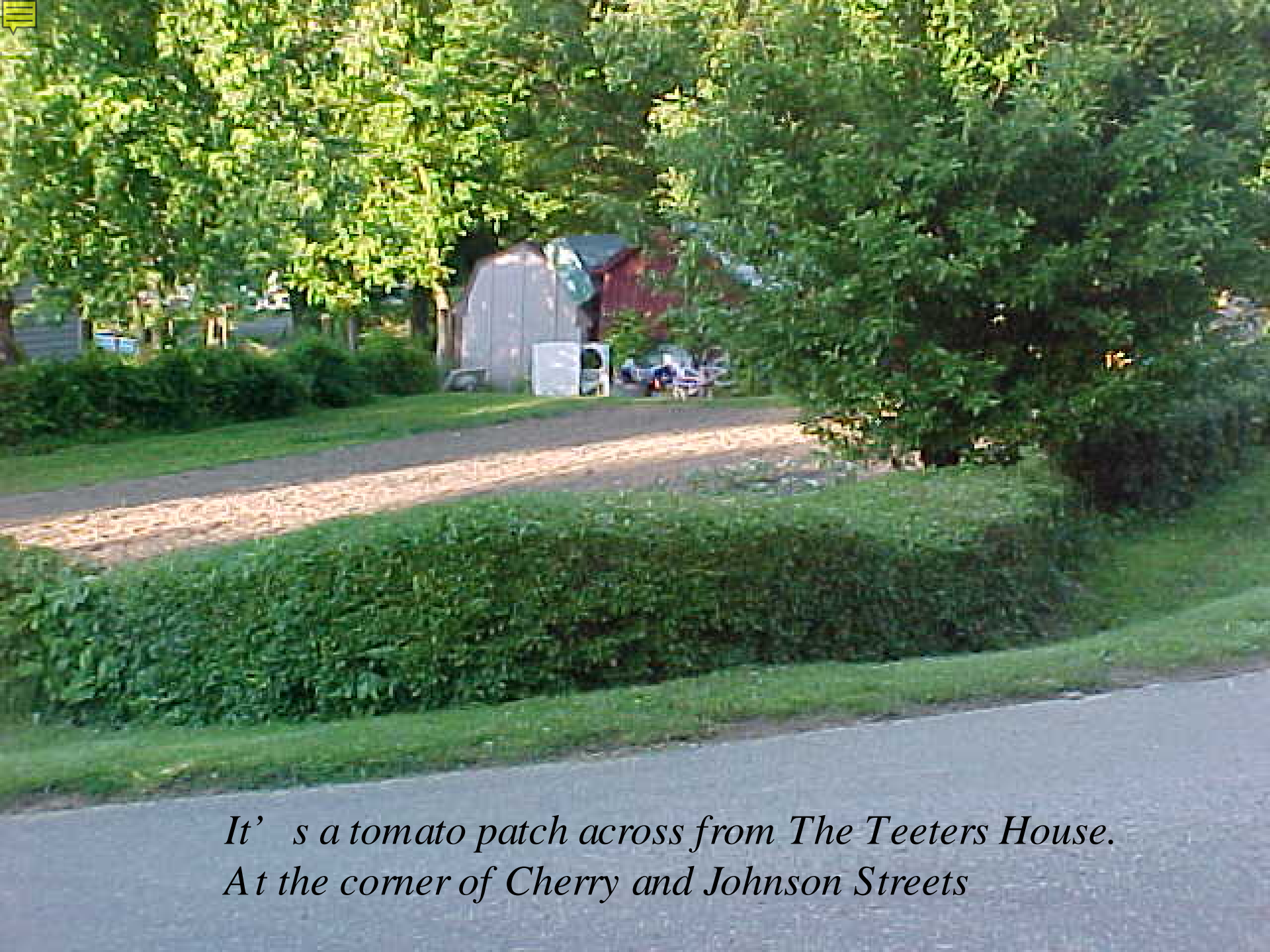
McDERMOTT

Cherry Street

This was the home of Opal & Bob Teeters. It's up Cherry Street to the top and then on the left. The school was across Johnson Street. (1. on the map) Dick and Libby first met there. He says he picked her out in the first grade. (c1928) Later they crossed the tracks and went to the 1912 Stone School.



Teeters' House



*It' s a tomato patch across from The Teeters House.
At the corner of Cherry and Johnson Streets*

Betty Hubbard

Betty Hubbard says that this cistern,
which is behind her son Homer's trailer
on Johnson Street,
was the water supply for the school.
The school was across Johnson Street
and about 100 feet west. (on the corner)



JAN 31 2008

Hubby's Place



The Cistern behind Homer Hubbard's Home

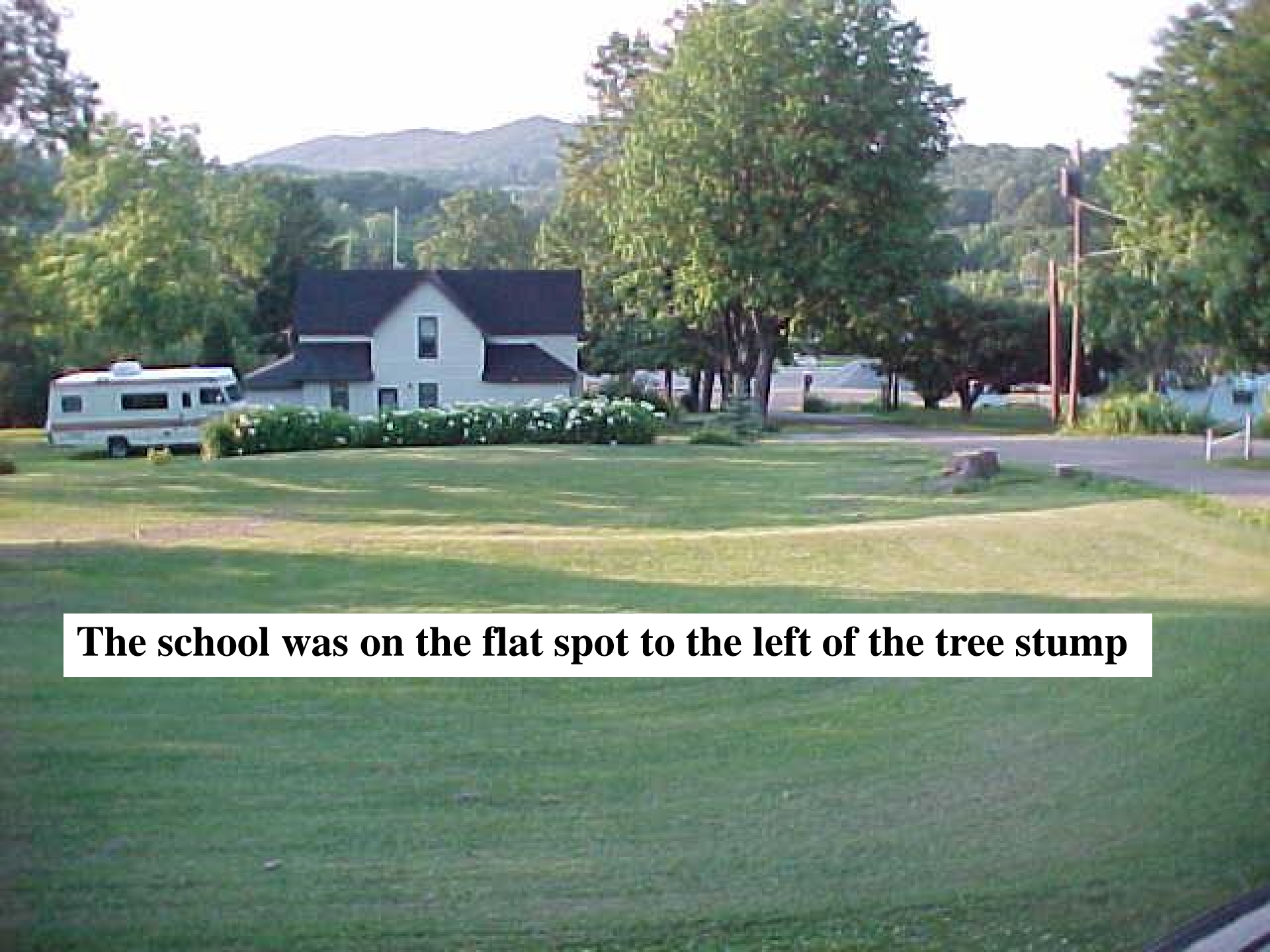
Maple Street

Lula Shaw went to school here.

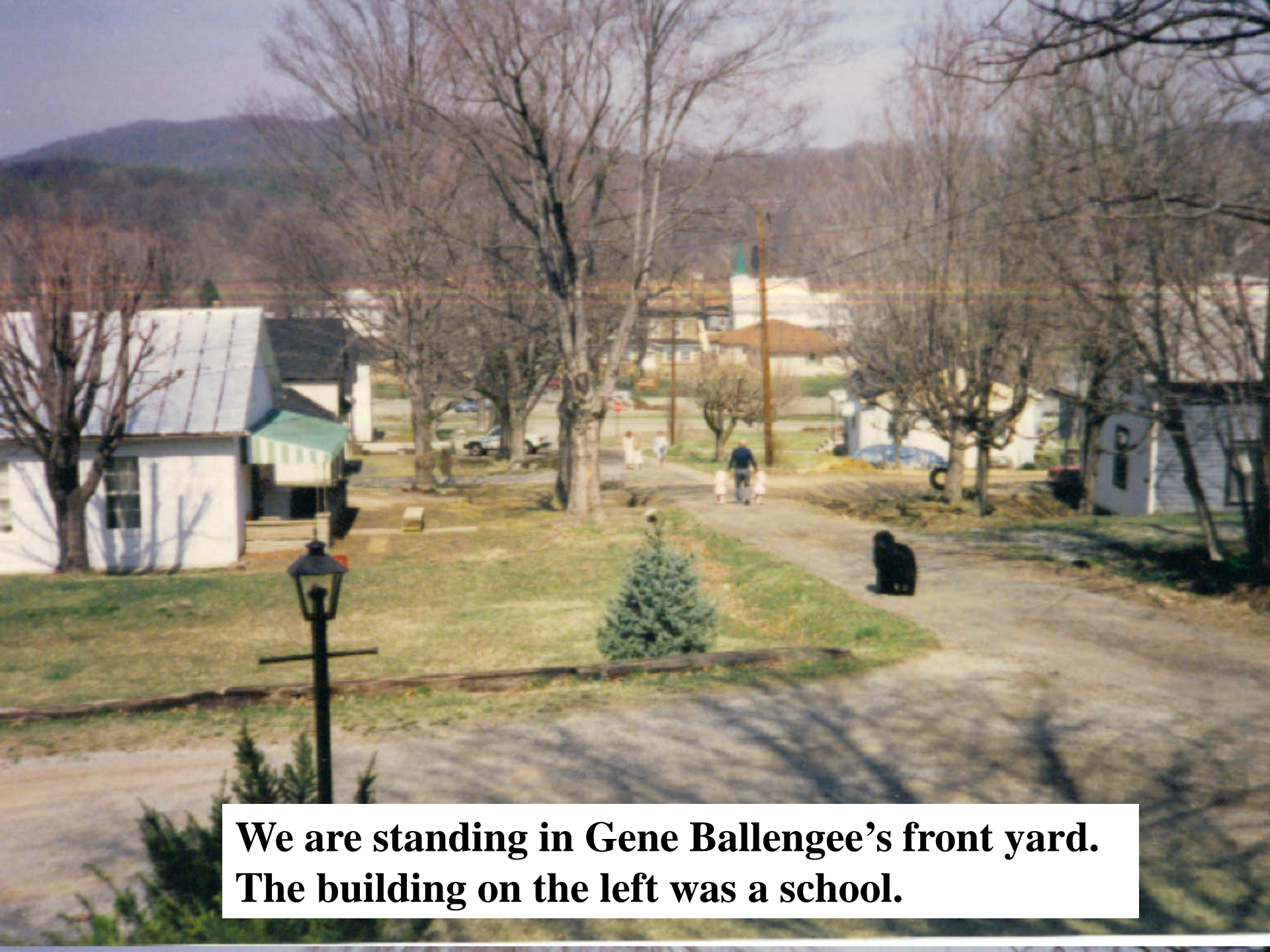
Gathel Carpenter lived here for many years.

It's down the hill from Buss Ballengee.

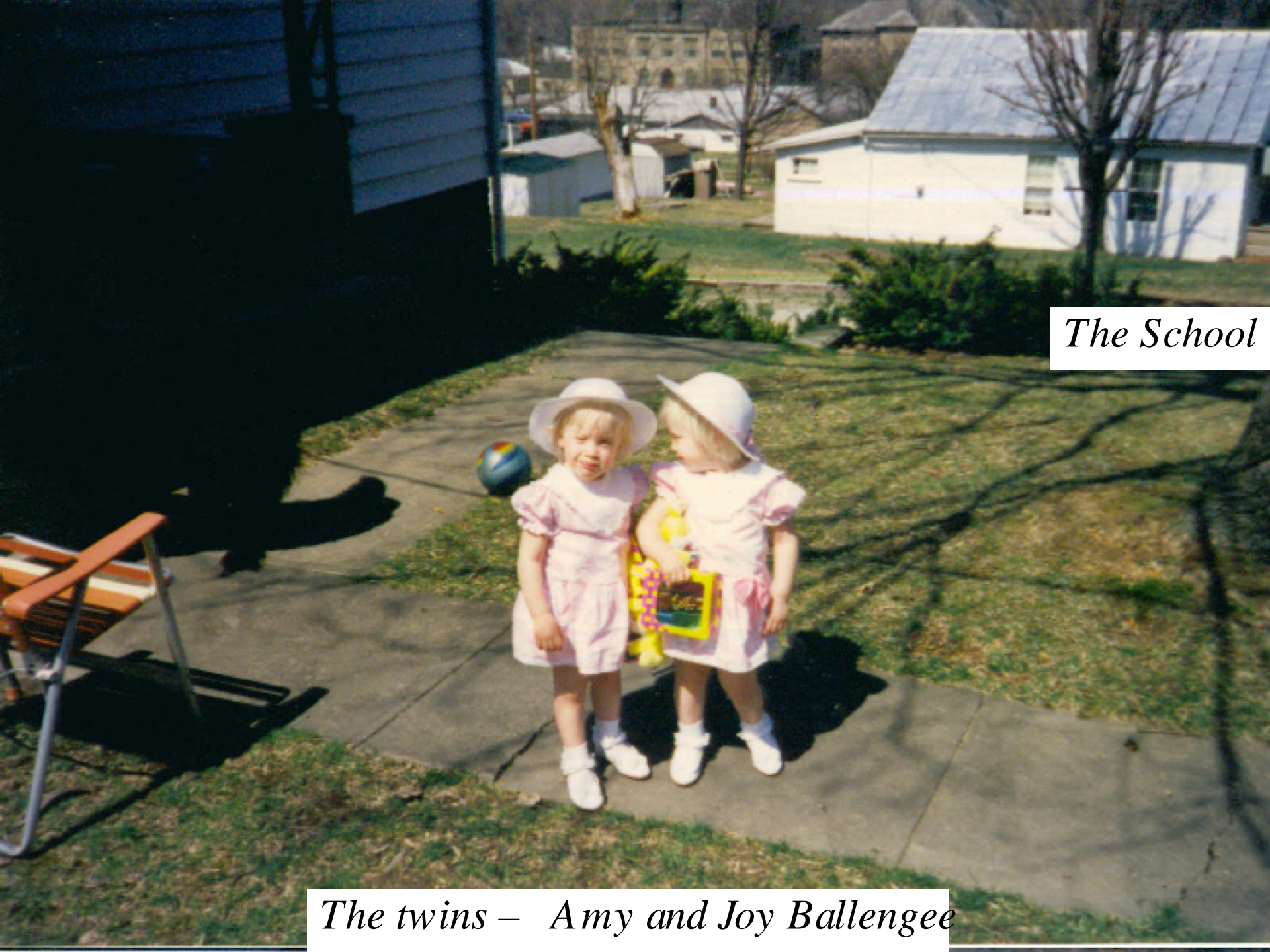
Location 2 On the map



The school was on the flat spot to the left of the tree stump



**We are standing in Gene Ballengee's front yard.
The building on the left was a school.**



The School

The twins – Amy and Joy Ballengee



In the background



Old McDermott

The original Rush Township High School built in 1912.

Trecie Henry worked at Waller's before she married Frank Schellenger. She told her son-in-law Dick Brown that Clark Waller didn't want this building to be built because the boys would get too smart and want more money to work in the quarry.



Rush Township High School built in 1912

Mrs. Margaret Hunley (Ballenger)
2nd Grade 1930-31



1930 -

Mrs. Mable Crabtree - (Keller)
3 + 4 1930-31



Mrs. Mable Keller
Fifth Grade 1932-33





Gladys Norman's Class – Grades 4 & 5 – 1932 - 1933

Sixth Grade 1932 - 33





Gladys Norman's Class Grade & Date Unknown



CLASSMATES



MY TEACHER

Mildred Noel

Names



Wanda Irvin

Jack Noel

Joyce Ann Rottgen

Jerl Rottgen

Harold Ray Stout



Darrel Thompson

Violet Strickland

Carl Copass

Freddie Throckmorton

Harry Strickland



Ruby Jordan

Loris Jean Grady

Marvin Allen

Helen Noel

Robert Smith



Katherine Charles

Cadle Burrell

Glen Carver

David Carver

June Throckmorton



Betty Caudill

James Hiles

Mildred Mullins

Walter Stout

Elizabeth Cyrus



Mona Mae Cyrus

George Thompson

Kathleen Clifford

Joan Donkey

Viola Graham



June Throckmorton

Virginia Strickland

Richard Strickland

Emma Colley

Junior Hiles

SCHOOL DAYS



CLASSMATES



Zelma Doll

MY TEACHER

Willard Crabtree

Billie Hinkley

Names



Lawrence Carver

Harold Jordan

Julia Smith

Kathleen Hinkley

Georgia Crabtree

Edna Strickland

Virginia Allen

Paul Donley

Elizabeth Niles

Mary Jane Cook

La Monde Jordan

Seraldine Mullins

Joanne Jordan

Ralph Thompson

Norma Jean Clifford

Marcella Stout

Adelia Burrell

Richard Graham

Menzie DeLong

Billy Crabtree

Ted Jordan

Wilalee Lunday

Faye Colley

Winona Lunday

Bella Leonard

Betty Strickland

Pauline Noel

Junior Carver

Anna Louise Charles

Sadie Strickland

Robert Stout

Florence Thompson

Florence Carver

Donald Roe

Erma Allen



SCHOOL DAYS



Henry
Shope

Leonard
Sly

Homer
Woods

Some Classes

Five class pictures from Bonnie Emmons. Not much information about names or years. Help!





The ball says - McD 11/17/30



*David
Long*

*Dick
Brown*

*Earl
Thompson*

*Glenn
Parsley*

Ted Thompson

Paul White

*Cliff
Parsley*

*Bill
Crawford*

*Harold
Ellis*

The ball says - McD 11/17/30

The best we can do!

Front: Cliff Parsley, _____, Bill Crawford, _____,
_____, Harold Ellis.

Middle: David Long teacher, _____, _____, _____,
_____, _____.

Back: Dick Brown, Earl Thompson, _____, Glenn
Parsley, Ted Thompson, Paul White.

Put these names where the belong!

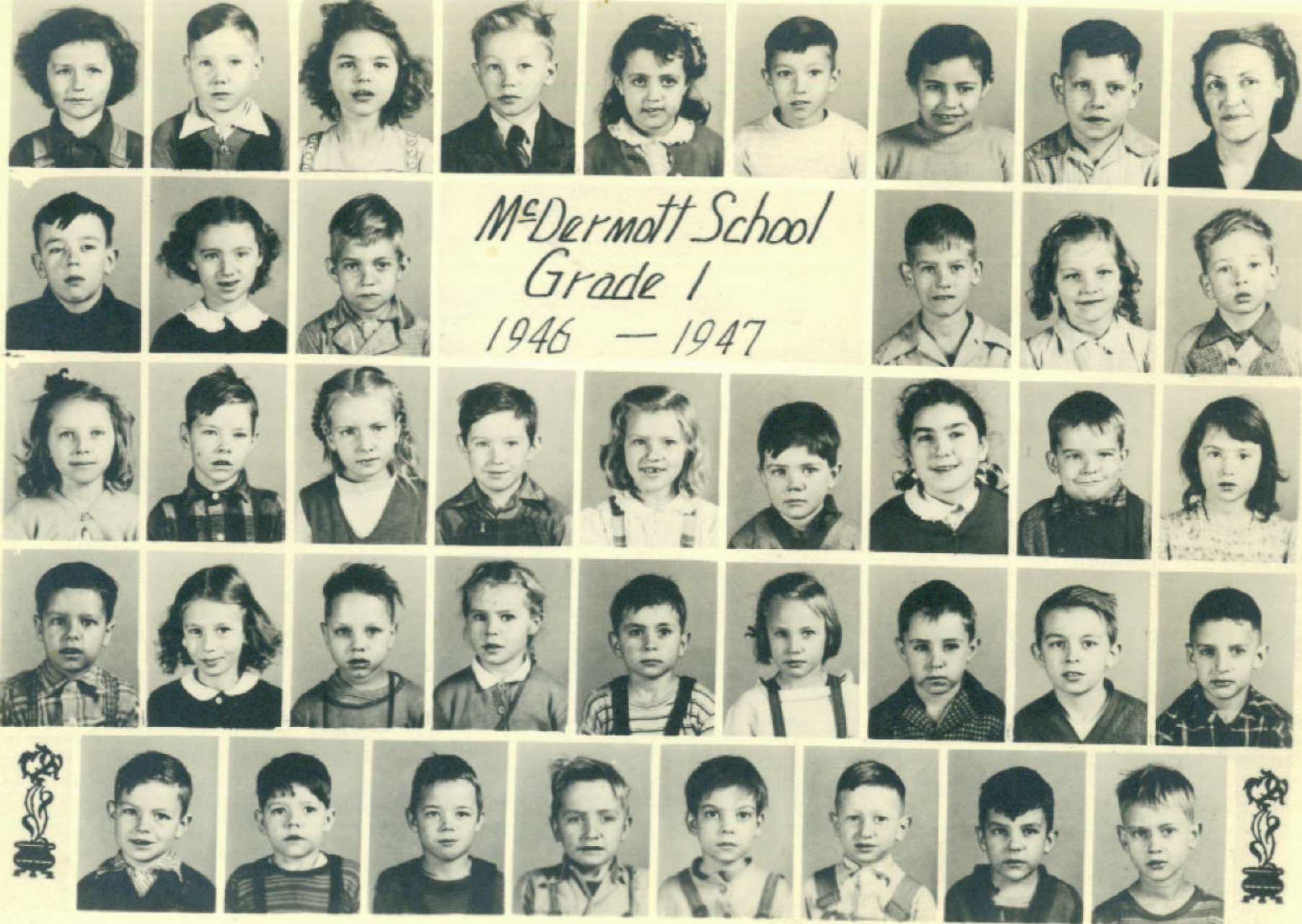
Eddie Hockaden, Ralph Hamer, Harold Norman,
Donald Crawford, Donald Hurley, Howard Crabtree,
John Carpenter, Charles Payne, Raymond Teeters.



Buss Ballengee somewhere



Row 2 over 7 Bonnie Parsley



Names on next slide

Mc Dermatt School Grade 1 - 1946-1947
Individual pictures

bottom row left to right

1.

2.

3. Harold Stockham "Jake"

4. George Kingery

5. Arnold Spencer

6. Charles Crahtree

7. Bob Lute

8. David Shaffer

Row 4.

1. Jim Haltman

2. Bonnie Parsley

3. Bob Crahtree

4. Bill Conley

5. Linda Carver

6. Larry Martin

Row 2

1

2

3. Orville Flack "Jack"

4. Betty Emmett

5. Bill Gillette

6. Linda Altman

7. Richard Schart

8. Jim Haltman

9. Elon Sherwood

Top Row

1.

? 2. Charles Culver

3.

4. Frank Prince

5

6. Jim Lute

7.

8. Joe Beasley

9. Mrs. Pearl Haffner

Row 3

1. Lynda Gardner

2. Glenver Current

3. Linda Crahtree

4

5

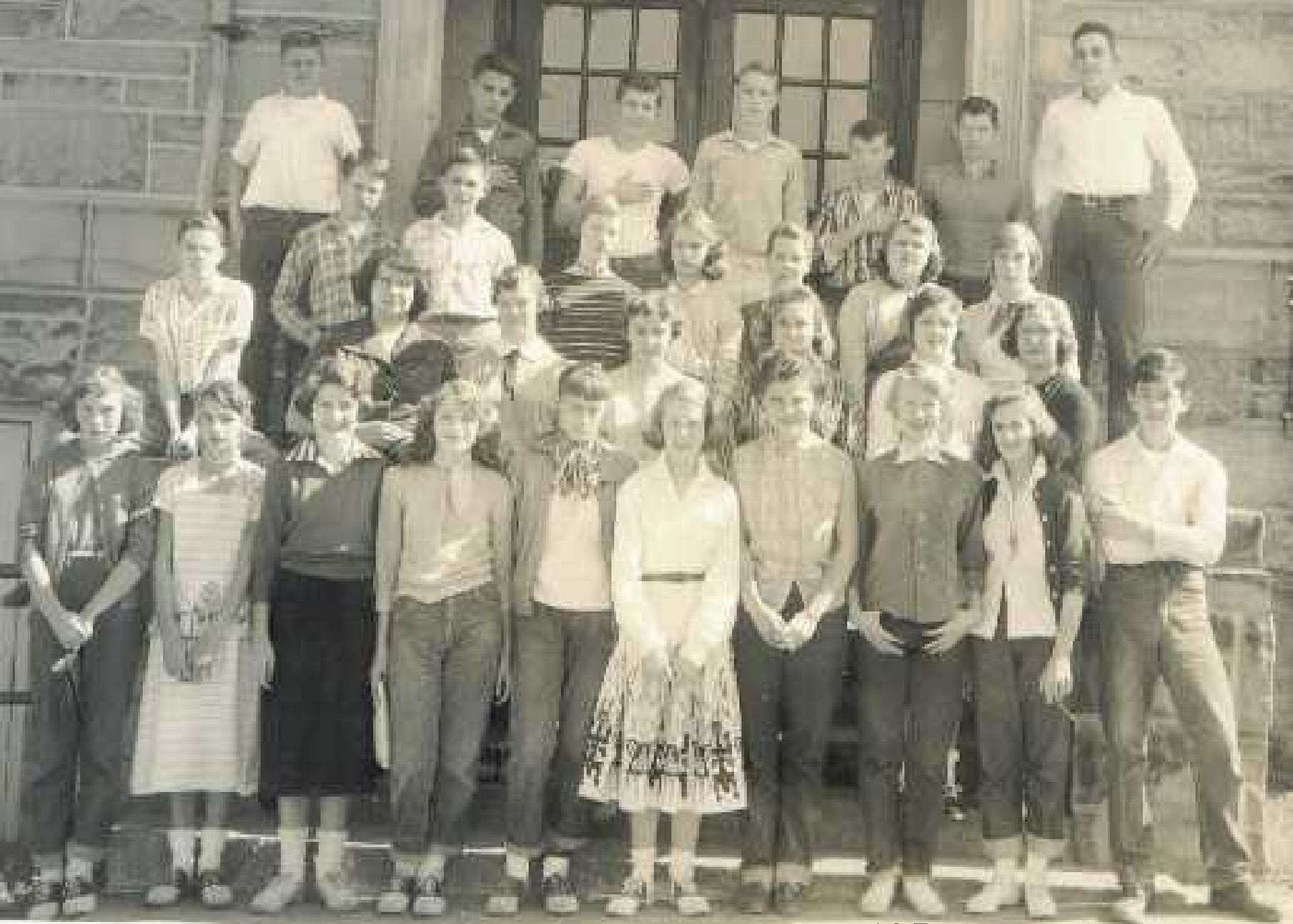
6. Dale Throckmorton ?

7

8. Larry Hakes Rosemary Free



McDermott Third Grade - 1947



McDermott Freshmen – 1957



McDERMOTT PUBLIC SCHOOL BUILDING, McDERMOTT, OHIO
ORIGINAL STRUCTURE BUILT IN 1912. ADDITION ADDED TO REAR IN 1923



**Check out the roof. The darker part is the original building.
The Lighter is the addition in 1923.
Windows are different too.**



Soon to be torn down.



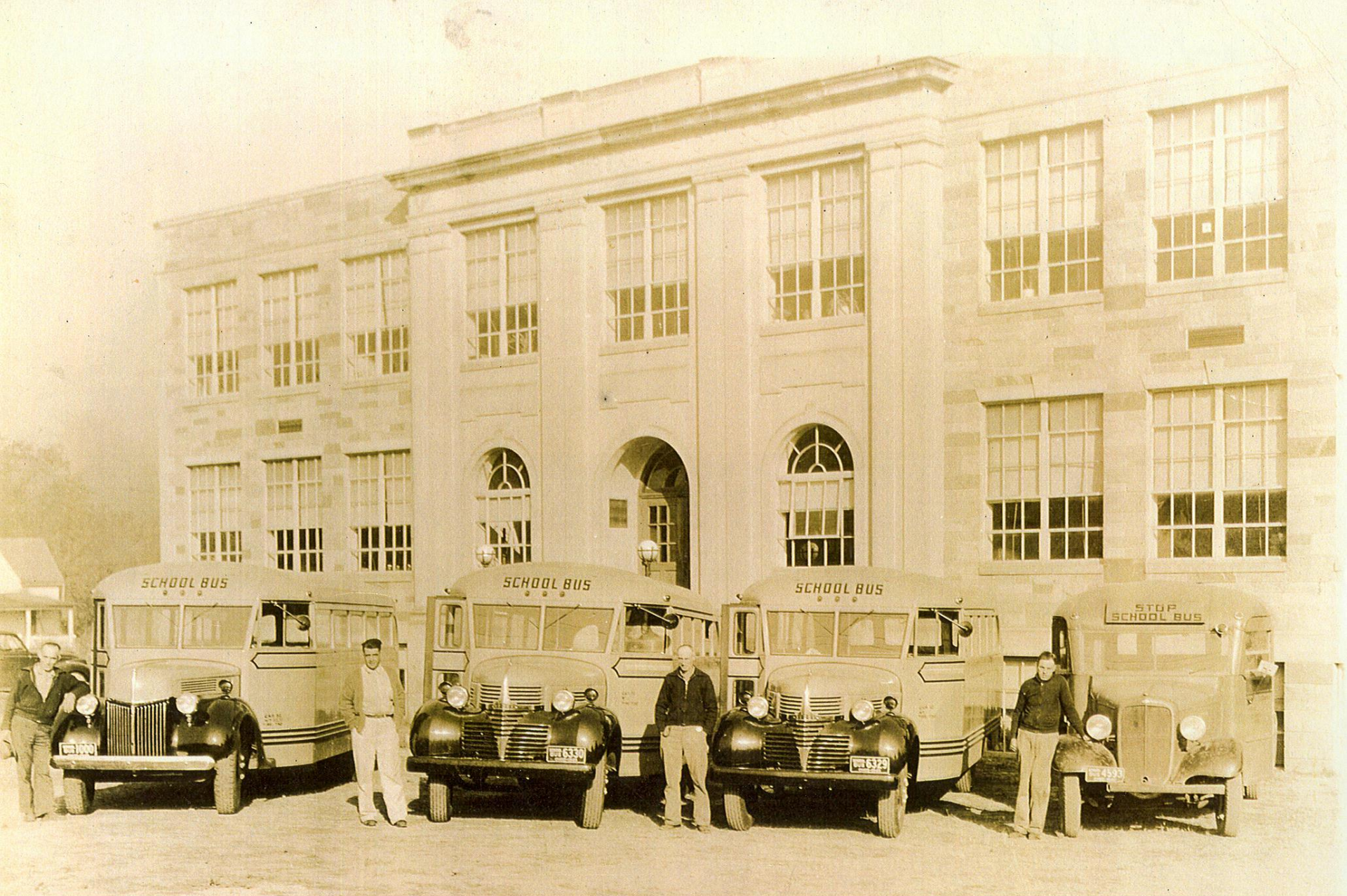


RUSH TOWNSHIP SCHOOL BUILDING
Mc DERMOTT, OHIO
DEVOSS & DONALDSON, PORTSMOUTH, O., ARCHTS.
TAYCO SAWED BED, SPLIT FACE ASHLAR

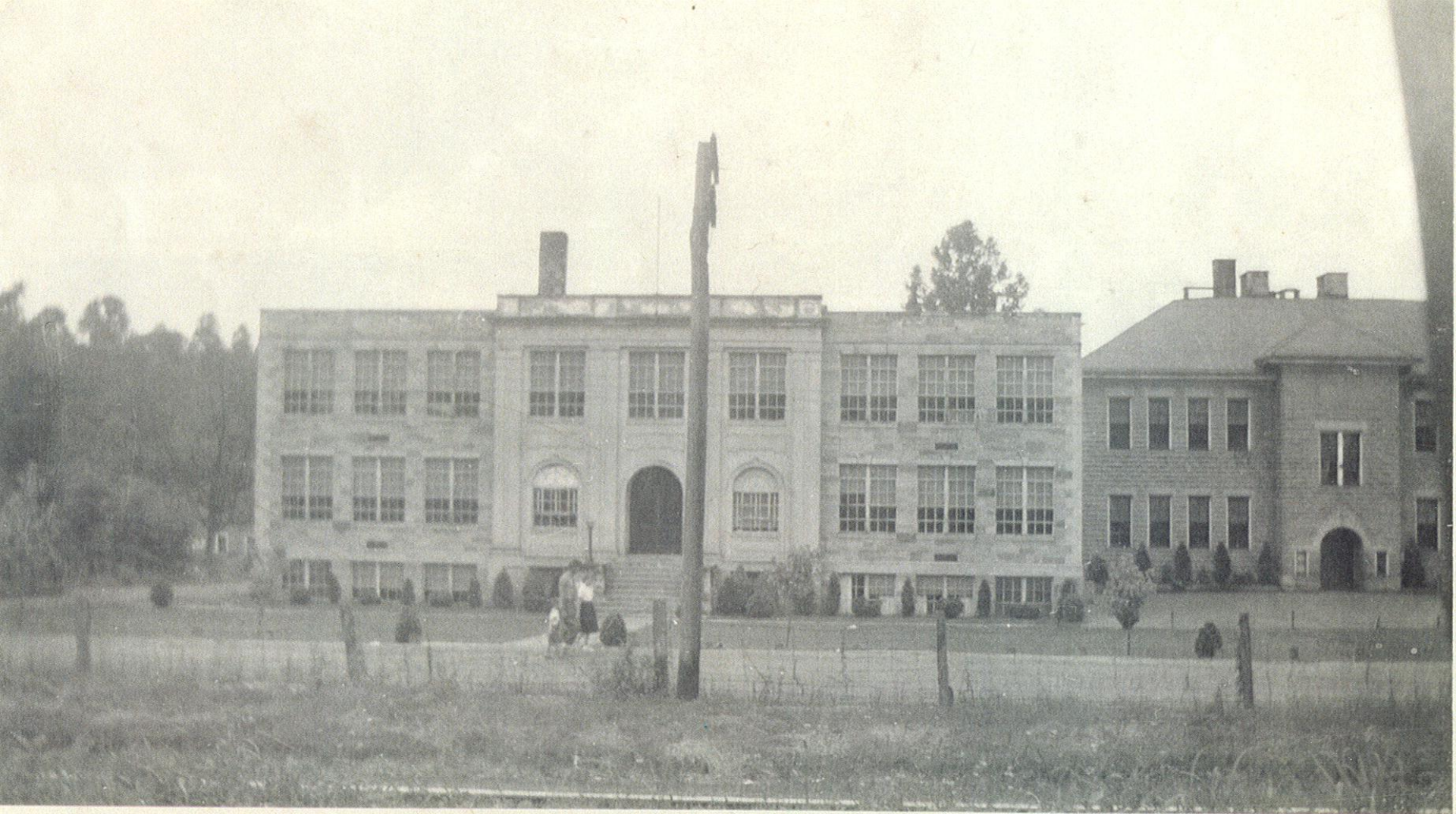
THE TAYLOR STONE COMPANY
Mc DERMOTT, OHIO.

August 20, 1936 - Lloyd Crabtree, Riney, Art, Harley Ellis, Lee, Chester, Jim Evans, John, Bill, Paul, Sam, Charlie





Bus Drivers - Frank Webster, Homer Boldman, Lowell Altman, Edgar Sparks



Before the metal buildings

March 17, 2001 - Razed one week later



March 17, 2001 - Razed one week later





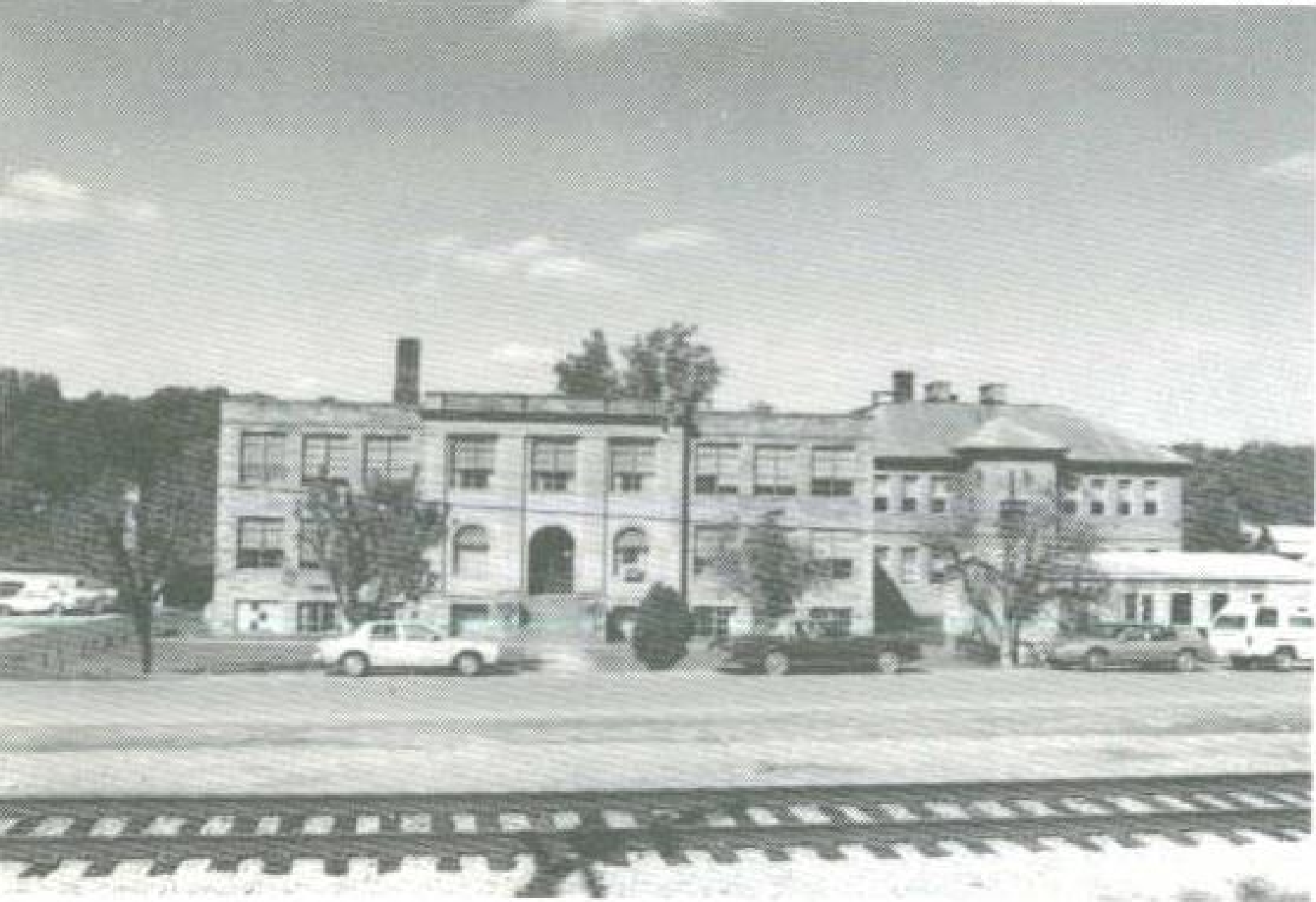


McDermott High School

McDermott (Rush Township) High
School opened in 1936. Razed in 2001.

1912 - Gone

In March of 2001 the 1912 structure was razed. The McDermott Fall (Stone) Festival, which had been inactive for a few years, was held on the site of the old school building. The fence divides water company property and soon to be village park. Ron Cox says the pigeons moved to the Rest Home.



MCDERMOTT ELEMENTARY

**Rush Township High School
McDermott High School**



McDermott School in 1980



McDermott Primary

McDermott Primary opened in 1956 in response to the increased population caused by the A-Plant. The Water Board owns all the McDermott buildings now.





The back side of the primary building



The Bus Garage – Dean Norman ran it

The Depot

Not all education takes place
inside a classroom.



Station Agent – Robert Scott



Noel Murray



Richard Smith



William Hontela



John Johnston



Ralph Jackson



Ruth Miller



Clyde Butler



Margaret Sperry

McDermott High School

Senior Class of 1946



Susan Kirkwood



Catherine Jones



George Smith



Earl O. Jones



Charles McPherson



Arlene Edwards



Gerald Evans



Bruce Howard



Anna Hildner



Edward Galt



Gene Babin



Frances Jones



Ellen Kyles



Katherine McPherson



Evelyn Boyer



John Schmitt



George E. Miller



Josephine Smith



Harold J. Hansen



Lillian Kyles



McDermott High School
Class of 1947





Kenneth Blanford



Kenneth Jones



Jeanne Jordan



Linda Kirkwood



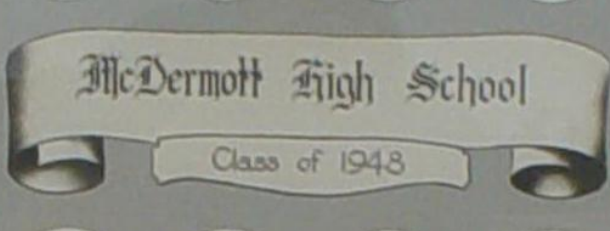
Homer Hubbard



Madeline Flanagan



Harold Hubbard



June Lefkowitz



Jack Farthing



Leta Lundy



Helen Miller



Shirley Kirkwood



Helen Lefkowitz



Buddy Pione



Edna Leonard



Julia Smith



David Brown



Fred Brown



Ida Portune



Margaret Koch



Rena Lundy



George Russell



Leta Lundy



Fred Pione



Carol Lundy



Virginia Flanagan



Evelyn Lundy



Arthur Lundy



Betty Lundy



Leta Lundy



Fred Pione



Jack Lundy



McDermott High School
1949





Dorothy Hall



Lester Odle



Janet Floyd



Jeanne Grady



Donald Schulte



Jane Strickland



Margaret Aitken

McDermott High School

Senior Class of 1950



Norma Meyer



Charles Aitken



Norma Hurley



Betty Ogle



Lois Thelmer



Judy Stokham



Raymond Smiley



Wynola Archer



Glenn Ballenger



Doris Hall



Garnette Riser



Robert L. Smith



Betty Cooper



Foster H. Wilson



Evelyn Taylor



Carl G. Hahn



Corinne Conner



Margaret Oliver



Florence Hoffmann



David E. Hartz



John Taylor



Robert Aitken



Julian Throckmorton



Charles Whitaker



Wanda Strickland



Fred Throckmorton



Naomi Vestine



Benjamin Portner



Betty Hansen

McDermott High School
1950-1951



Patricia Mayers Culp



John Wedebrook



Elizabeth Phillips



Robert Penny



Ona Compton



Tony Miller



Raymond Jackson



Phyllis Higgs



Howard Jones



Wanda Irvin



Foster Wilson



Margaret Oliver



Earl G. Harnoy



Evelyn Taylor



Robert McNeal



Eugene Hulchman



Howard Nye



Ralph Africa



Ruth Taylor



McDermott High School
1951-52



Portraits by Harding
1001 Commercial Building, St. Louis, Mo.



McDermott High School

1953





McDermott High School
1954



Portraits by Harding
The Harding Studio, Inc., Portland, Ore.



McDermott High School
1955





Dave Colby



Bruce Blaine



Kings Bentley



Dale DeLong



Betty Brading



Henry Kicker



Harold Tinkett



Peggy Conway



Charles Carpenter



Cynthia Kicker



Earl Compton



Esther Oliver



Larry Latta



Shirley Kunkin



John Jamison



Charles Bennett



Patricia Patterson



Paul Miller



Ernest Smith



Walter Smith

Mc Dermott High School

CLASS OF 1956

Portraits by
HYLAND'S STUDIO

PORTS MOUTH, OHIO



James Bailey



Bob Curran



Carl Martin



Earl H. Henry



Jack Conley



Ronald Hall



John W. Jordan



Frances Johnson



Emeline Hall



Helen Myers



D. E. Hughes



Thomas McChesney



James Cahoon



Louise Patton



Virginia Mitchell



Robert E. Nelson



Dick Taylor



Wm. E. Wilson



Lynn E. Wilson



E. E. Wilson



Louise Taylor



McDermott High School
1957



Produced by Wendell
McDermott High School



McDermott High School

1958



Thanks For Watching!

If you have a comment, correction or something
to add, contact Jake Orlett

at 740.259.5747

Or

jakeorlett@peoplepc.com

Or

jorlett@northwest.k12.oh.us