

*Otway
Village
Schools*

Brush Creek Schools

Schools in Brush Creek Township when the township was formed included:

- | | |
|-----------------------------|----------------------------|
| <i>1. Dry Run</i> | <i>2. Oswego</i> |
| <i>3. Upper Rarden</i> | <i>4. Jones Corner</i> |
| <i>5. Hoffer Hill</i> | <i>6. Lower Rarden</i> |
| <i>7. East Mt Joy</i> | <i>8. Upper Rocky Fork</i> |
| <i>9. Mount Hope</i> | <i>10. Dunlap</i> |
| <i>11. West Mt. Joy</i> | <i>12. Otway</i> |
| <i>13. Lower Rocky Fork</i> | |

Townships Split

In 1891, Brush Creek Township was split into two parts and Rarden Township was formed. Schools in Rarden Township were: Rarden Village, Dunlap, Hoffer Hill, Dry Fork, (Lower Dry Fork), Thompson (Upper Dry Fork), McBride, O' Bryant, Hackworth Hill, Mount Joy, and Union Hill.

Stayed in Brush Creek

Otway

Lower Otway

Oswego (Tick Ridge) Jones Corner

Upper Rocky Fork Lower Rocky Fork

Big Spruce

Mount Hope

Knoxel Hill

Big Run

Jacobs

Patterson

Lower Otway

This building was across from the depot where SR 348 intersects SR 73.

It was the first school in Otway and was known as the Long House.

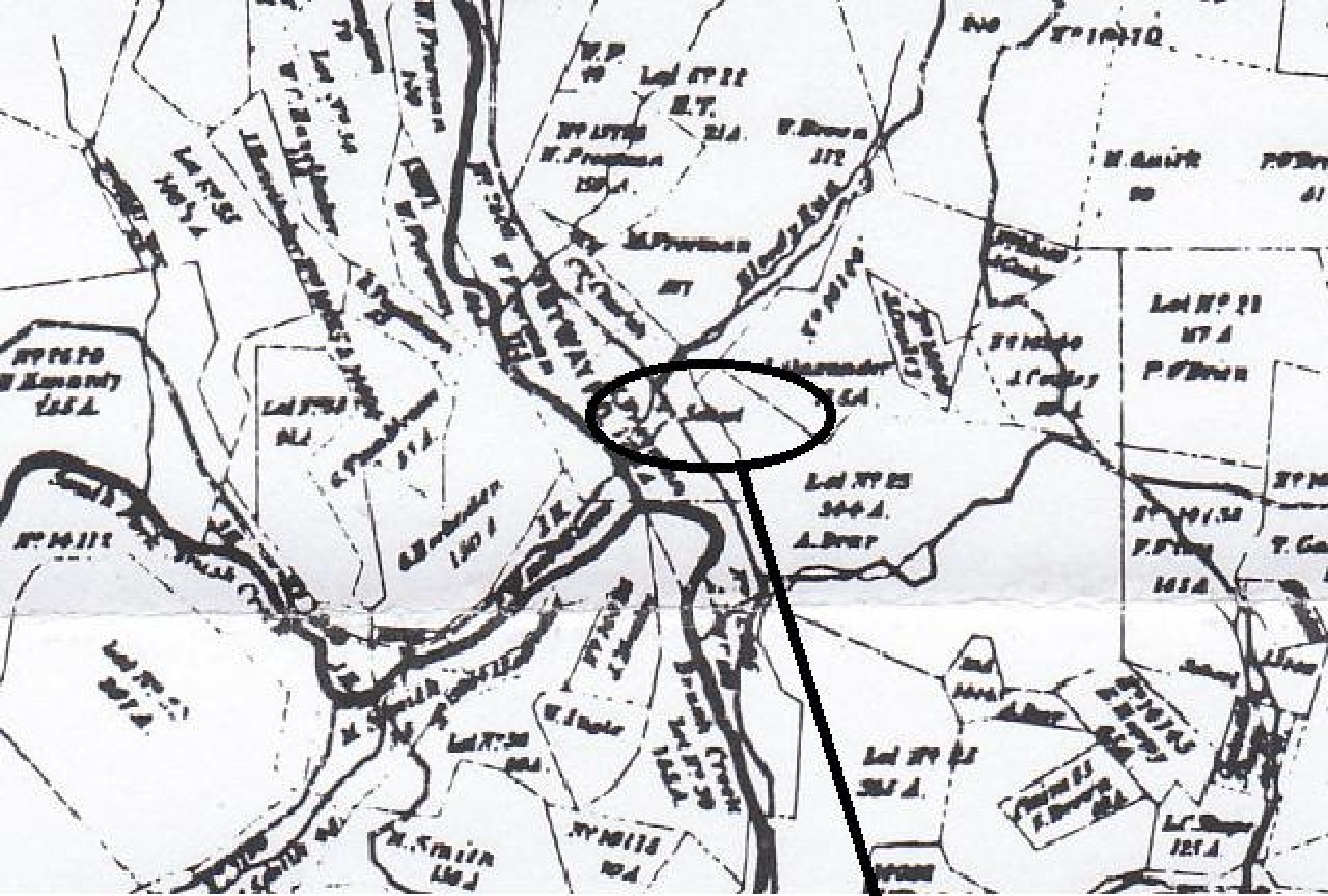
Louise Davis Crabtree lived there. John Hamilton lived there. Homer Dye lived there.

Stella Rachford Seaman lived there when she was in the first grade.

Cleo Ralstin said “I don’t know about the house but that’s Ray Kuhner’s car.”

Terry Hubbard tore the porch off.

The map is dated 1875



Lower Otway

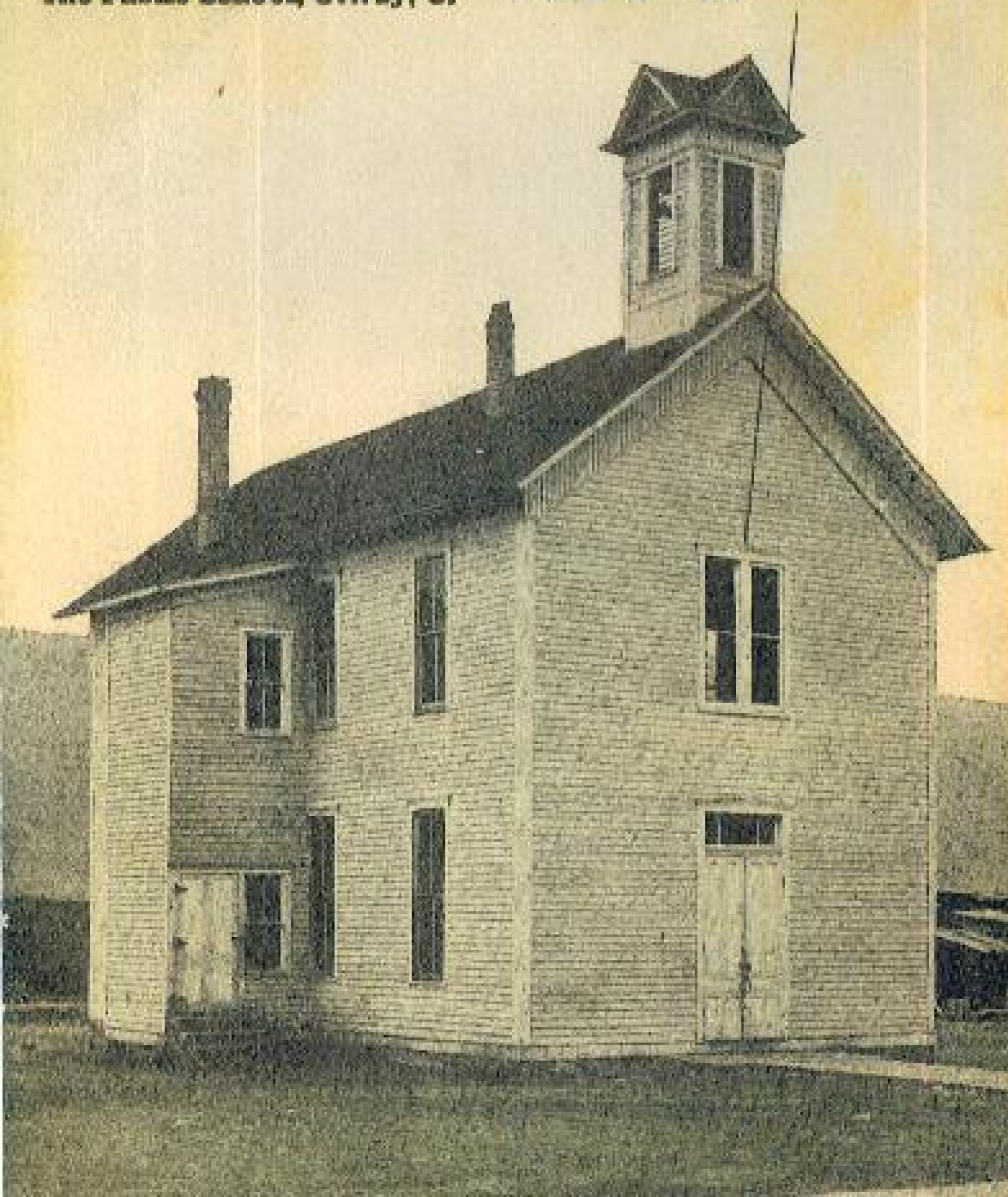
Lower Otway
Terry Hubbard hit the porch
and tore it off - House now gone
Ray Kuhner's car
Next to Rick Lee's house





2002 – *same tree*

Otway High School



*This picture is in the
Otway Room.*

*Call Georgia Furr
to see it*



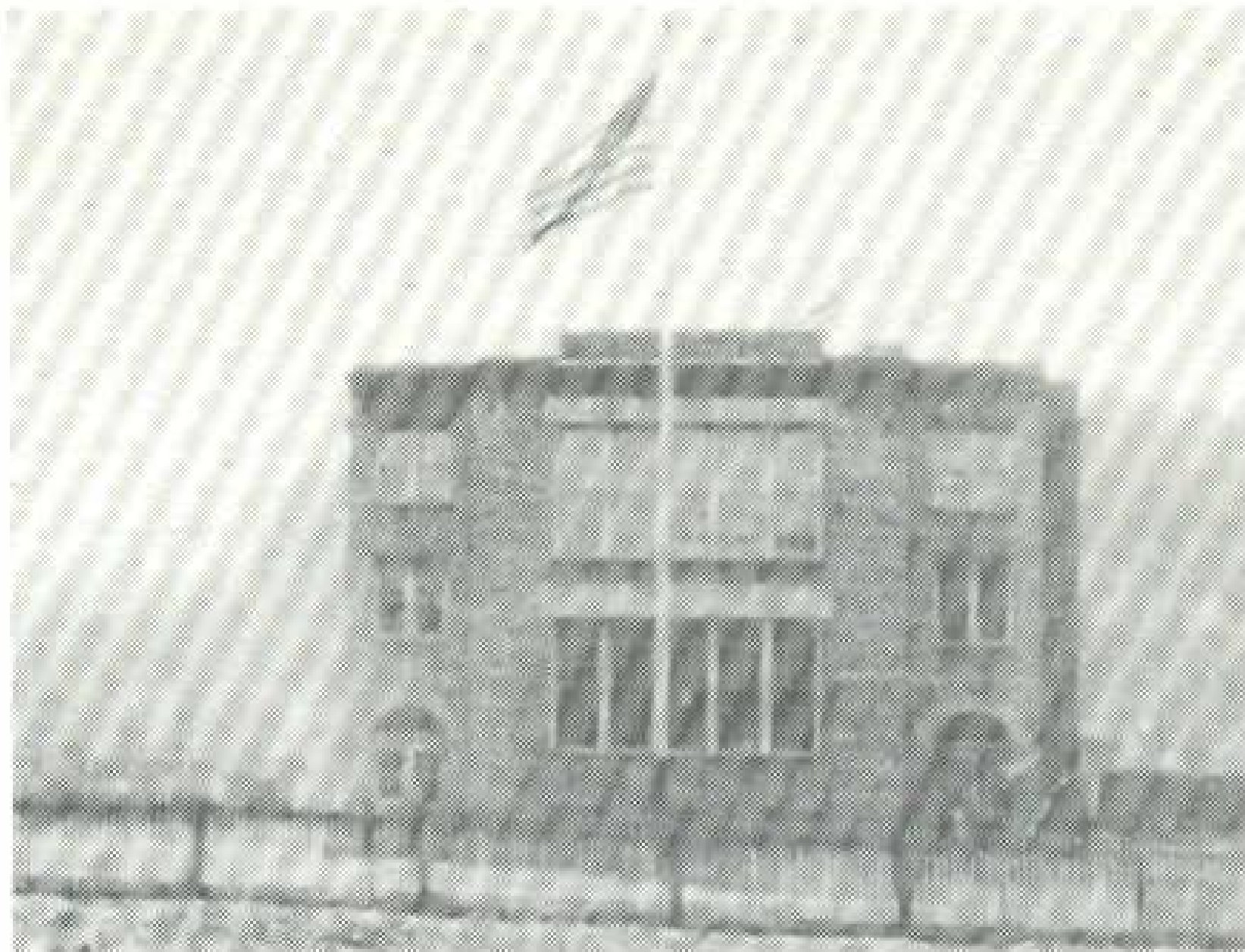
**This building was built
in 1889 and opened in
1890.**

It had three rooms.

**It burned down in the
Good Friday Fire
April 21, 1916**

**The brick building stands
on the same site.**

First frame School in 1890



Brick School in 1917.



Otway 1921

Picture courtesy of George Ralstin and Betty Lathrop



Bob
DeLong

?????

Glenn
Davis

Oscar
Jones

Firman
DeLong

Anna
DeLong

Bessie
Abbott

R.G.
Wood

Ruth
Beckhold

Ada
Jones

Bob
Ivers

Blanche
Davis

Lucille
Turner

Ruth
Jennings

Fred
Willy

George
Hoople

?????

?Davis?
Dettwiller

Otway 1921

**Front: ?Davis or Dettwiller?, unknown,
George Hoople, Fred Willy**

**Middle: Ruth Jennings, Lucille Turner,
Blanche Davis, Bob Ivers, Ada Jones,
Ruth Beckhold, R.G. Wood**

**Back: Bessie Abbott, Anna DeLong,
Firman DeLong, Oscar Jones, Glenn
Davis, unknown, Bob DeLong**

Redbirds – 1921

Bob Ivers and Ada Jones married.

R.G. Wood was the principal and teacher.

*Ruth Beckhold married Dale Pieper and was
known as Becky Pieper*

George is the oldest of the Hoople boys.

Blanche Davis married George Mains

Bob Delong became principal at Nauvoo.

Children of Mini Evans & Lou Davis

Frank married Violet Pierce

Clara married Ted Dettwiller

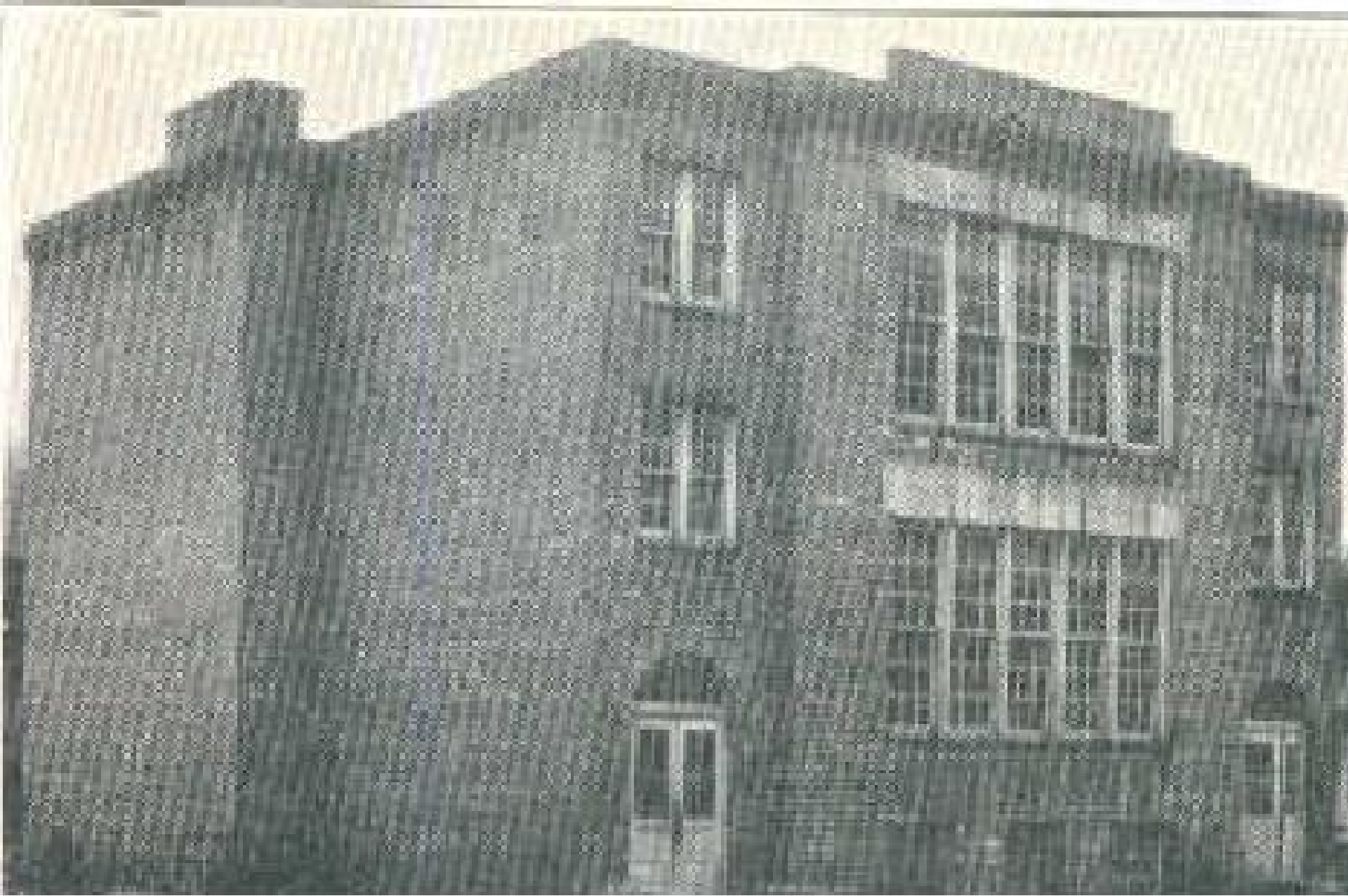
Ella married Roscoe Seaman

Margaret married George Hoople

Arthur married Ruth Jackson

Blanche married George Mains

2 infants buried at Old Garvin Cemetery



Otway - 1926 Scioto County Annual

Otway

Brick School





Back row:

Alma Davis

Mary Faul

R.G. Wood

Clara White

Middle Row:

Margaret Davis

Blanche Davis

Ada Jones

Front Row:

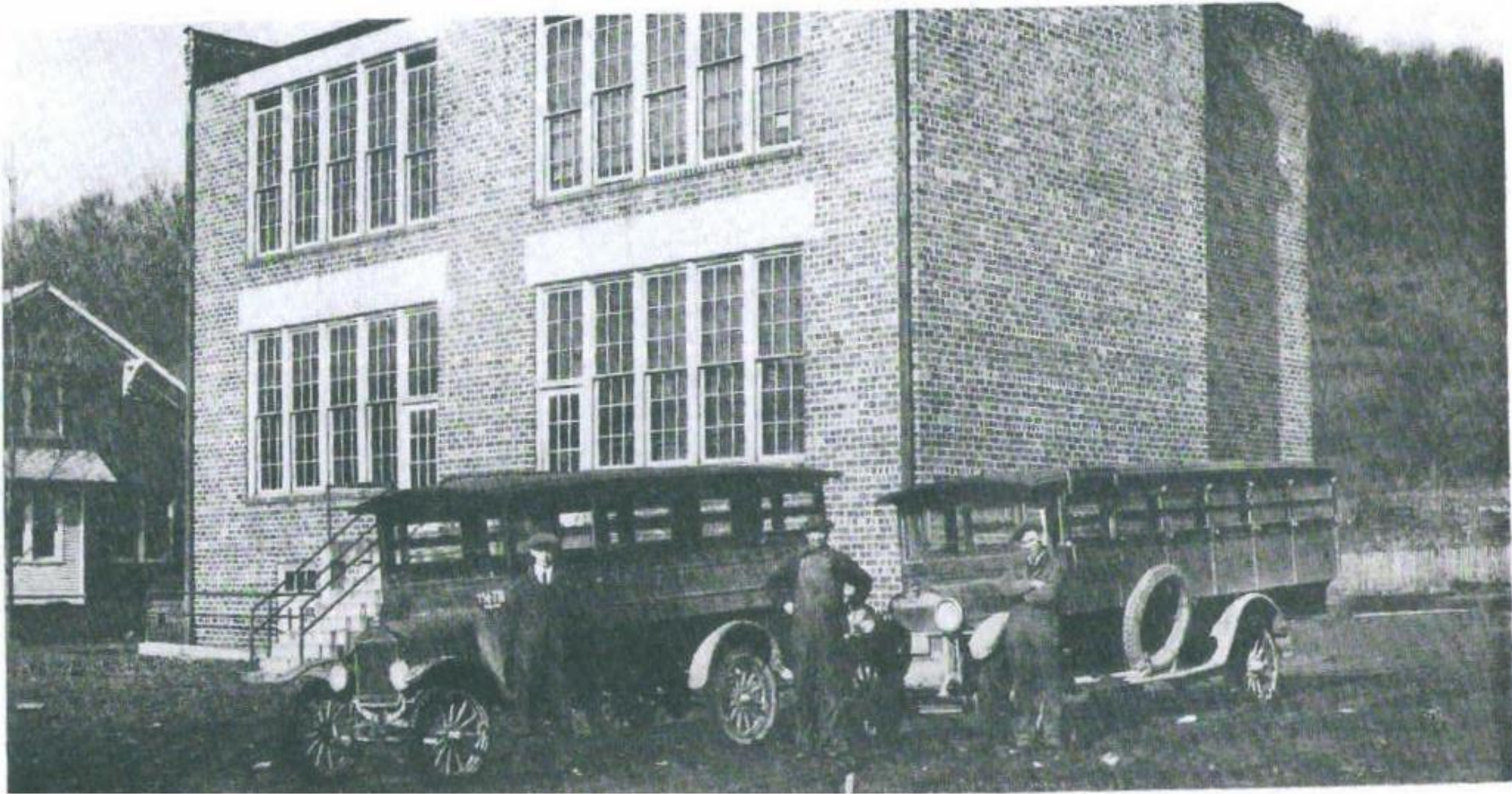
Lucille Turner

Ruth Walsh

Notice the folding doors in
the background.



Sitting: Ferman DeLong, Carl Baden, John Ingles, Robert DeLong
Standing: Coach C.O. DeLong, Pearl Clark, Ellsworth Braden,
Oscar Davis, Fred Willey. Check the doors in the background.



Cecil Jewett (Sammy), driver of the Union Township bus from the Flats. Warnie Pridemore (Barney Google), the faithful Janitor. Floyd Lawson, (Joe Quince), driver of the Brush Creek Township Rural Schools Bus. Here we have the three, arms behind him (Sammy), arms akimbo (Barney), arms folded (Joe) – a great trio, “I’ll tell the world.”

Other things to see

**Doc Gordon's house
(The Volunteer House) is to the left
See the bay window.**

**There are two top floor rooms.
Not replaced after the 1945 fire.**

**There are two doors and
A set of steps from the rear of the school.**

The steps to the furnace room are still there.

Folding doors

Some folks have a memory of or have heard stories about doors that folded back so the children could play ball.

Bill Platzer - Bob Clark – Anthony Hoffer – Norvel Davis – Chester Ralstin – George Ralstin – Cleo Ralstin - Emma Dettwiller – Rose Ann Joyce – Edith Montavon

Count floors B-1-2 so they were on the first floor. The two doors in the rear of the building were in this room. The steps were a fire escape.

There is a lintel visible in the fire picture that would have supported the top floor. No support posts.

The addition of the old gym in 1925 meant that the large play area was no longer needed.

The doors were removed and a permanent wall installed after the 1945 fire



1923-1924 O.H.S. Baseball team
Back Row (L to R):

Coach Calvert

Forrest Kidder

Cecil Jewett

Earl Freeman

Fred Willey

John Kratzer

Left Column (F to B)

Nelson Walden

Pearl Clark

Harold Freeman

Harold Graham

Right Column (F to B)

Ferman DeLong

Oscar Davis

Glenn Davis

Hosea Freeman

Harry Sanderson (middle)

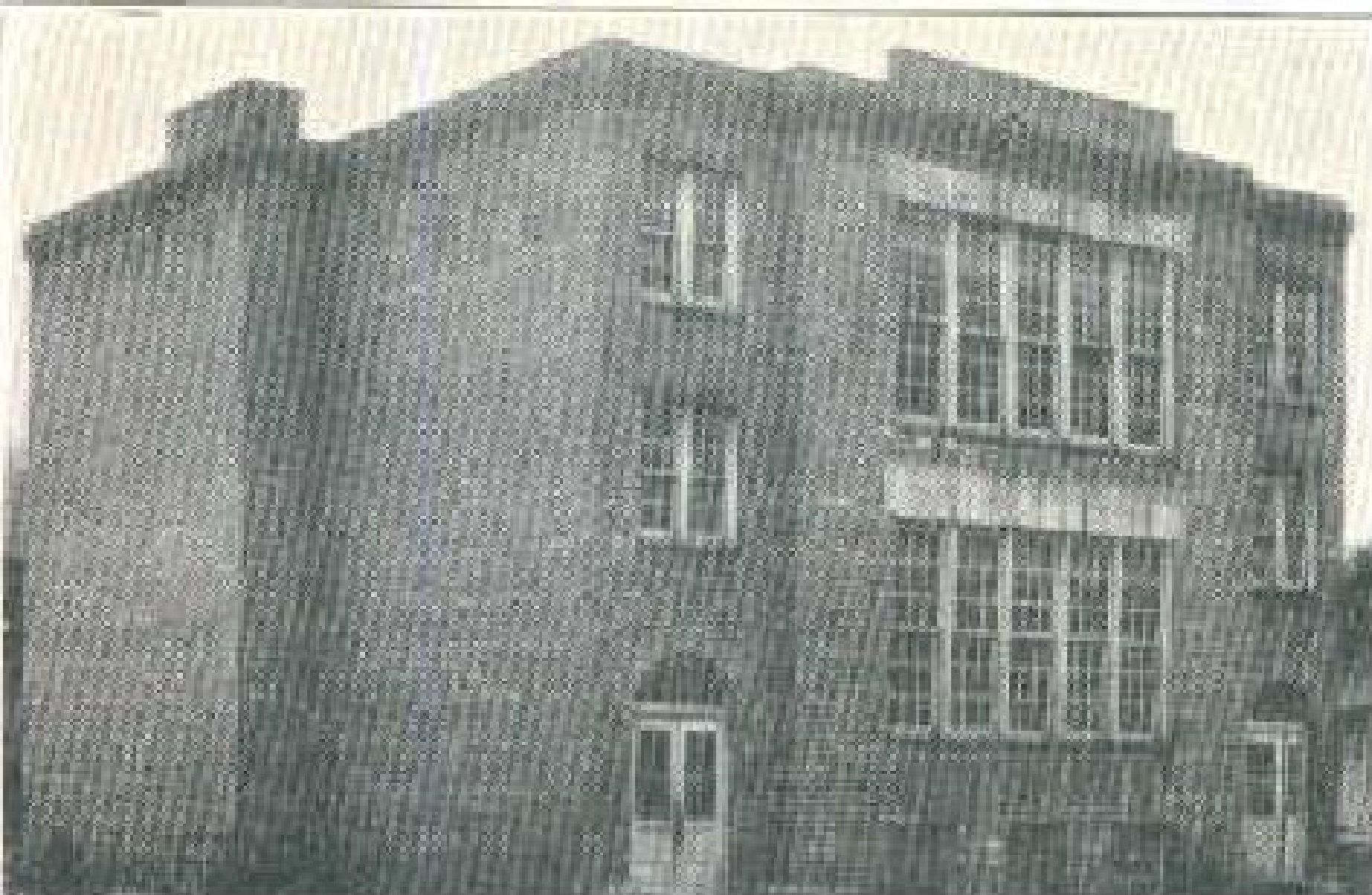


Note the two back doors.

Fire Escapes?

Exits from the Big Room?

Check Slide named Helpers



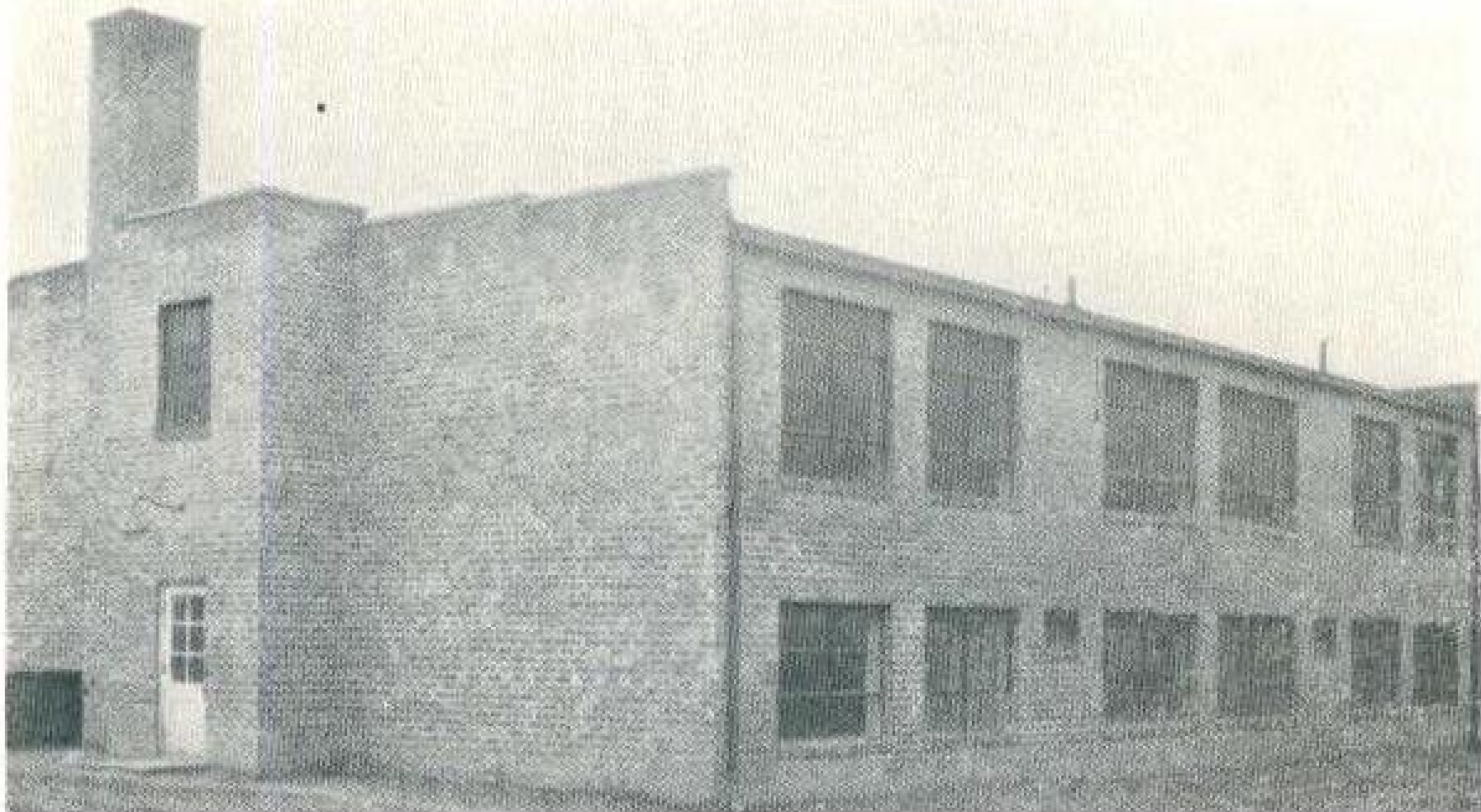
Check out that Chimney. It was modified in 1935.



The chimney now has a metal cap and TV antenna. It's now a vent to bring combustion air for the new furnace. There is another behind the new tall chimney.

Printed Backwards

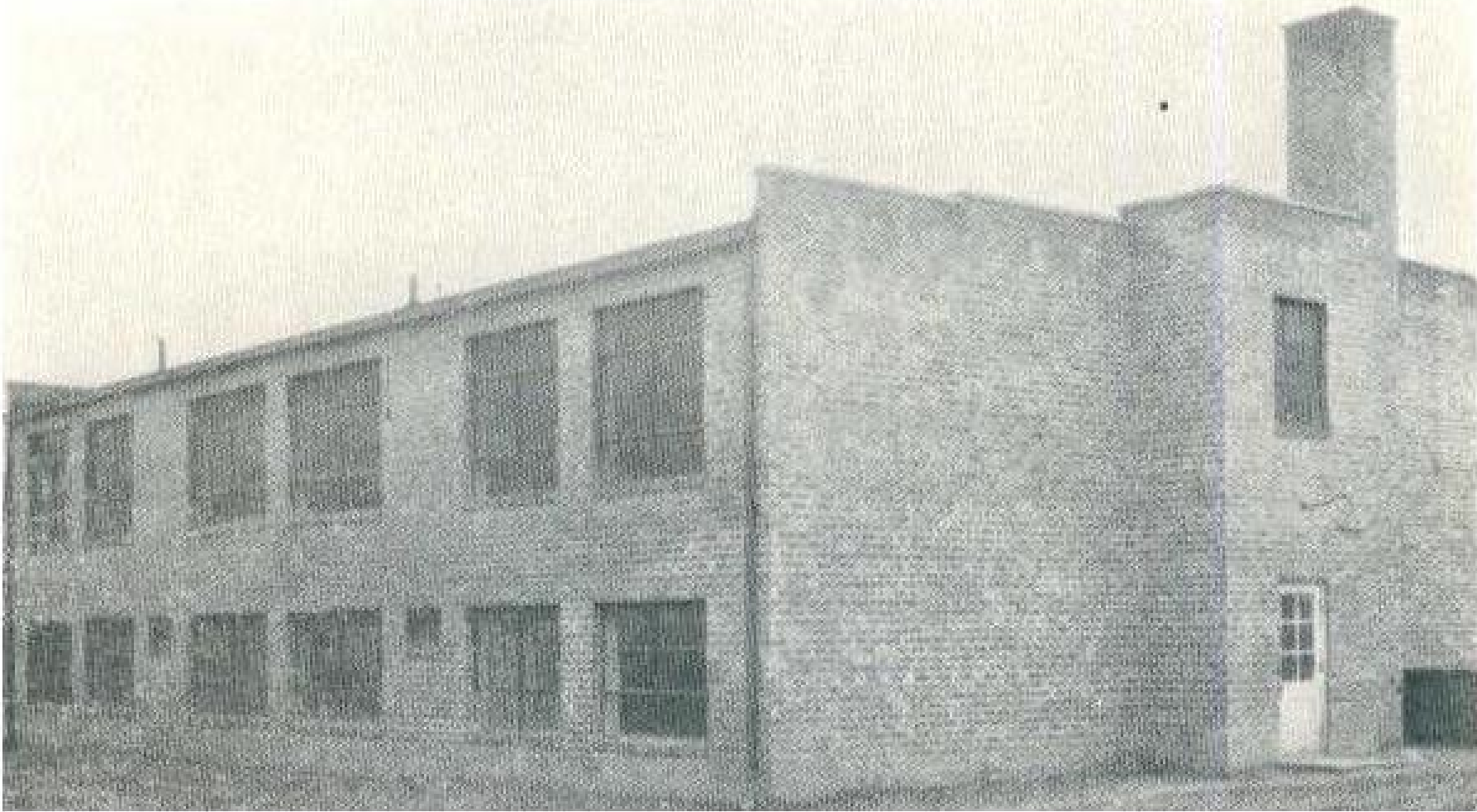
*This picture is in the
1926 Scioto County Annual.
This is how it looks in the book.
(They turned the negative over.)
It' s printed backwards.*



This is how it should look.

*You are standing in the Catholic
Church parking lot.*

*Notice there are three sets of
windows*



Standing in the Catholic Church parking lot
Opened as the high school in 1925.



Added In 1925
Remodeled in 1935

From the 1926 Scioto County Annual

... A new high school was now required by state law and this year, 1925-26, the Otway High School students took up their studies in their new quarters.



We hear from Jesse Woods and Carl Koenig that there is a fuel tank and a water cistern buried in this open area.

Now there only two sets of windows.

*So the three floor part with the stairway
was added later – 1935.*

*You can see mortar joints where the
third set of windows was.*



*The six windows on the
left were added by the
WPA in the thirties.*

*The one-room Schools
closed in 1935.*

Changes by WPA in 1935

New furnace - tall chimney - coal bunker.

Back steps removed – front steps added.

Restrooms in basement.

Home Ec and Shop in basement.

Two classrooms in first floor

Study Hall/Library on top floor

*Connecting Hallway to 1925 High School
which closed in two windows.*



JAN 16 2008



JAN 16 2008



JAN 16 2008

Bob Clark

The steps.

I graduated in '46.

I don't remember them not being there.

**We used to jump from the top railing
to the roof of the coal bunker.**

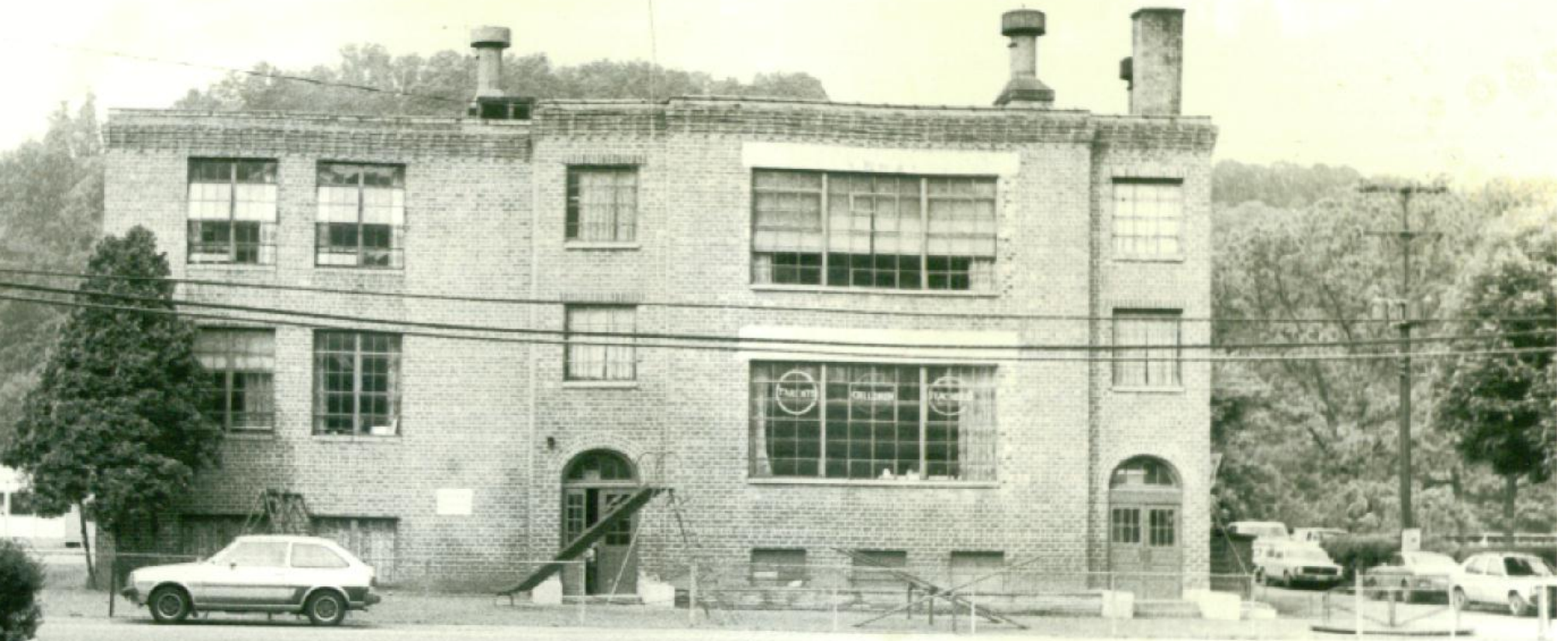
If you got caught – you got a whippin'

If you didn't make it – it hurt like the dickens.



JAN 27 2008

**Brush Creek High School
Otway High School**

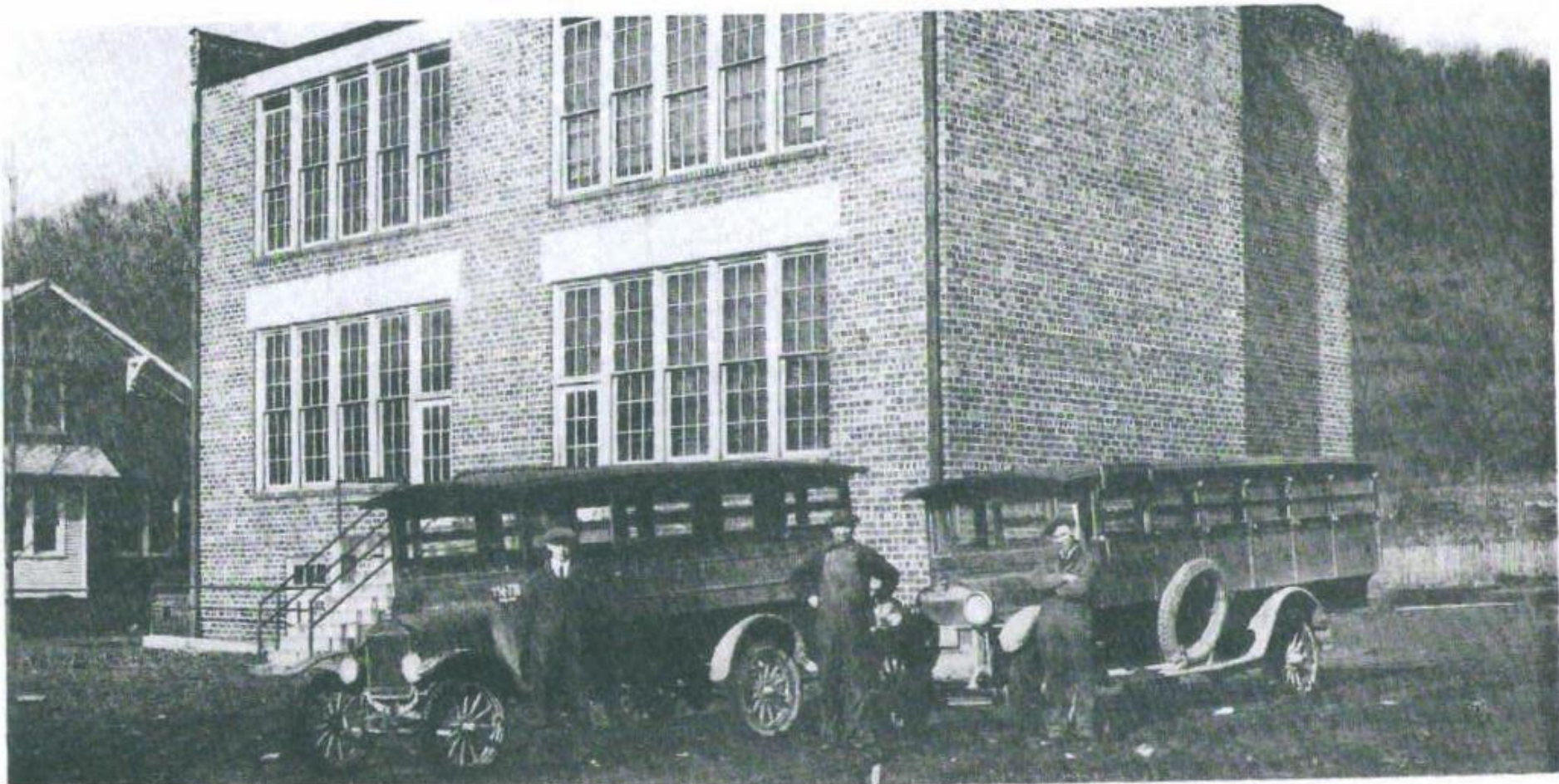




Otway School



Otway – Burned Sunday April 22, 1945



1923 - Before it burned.

Again in 1945, the grade section of this school burned and was soon rebuilt on the same foundation, but minus two upper rooms.

**From
Echo of Otway & Brush Creek
Township History
by
Helen Christian**



The missing rooms were the Second Floor



JAN 18 2008



**This roof was the floor
of the classrooms
that were not replaced**

JAN 16 2008



This window may have been a door that led to the missing rooms

JAN 16 2008

Lintel

In the middle of the building, you can see a lintel extending across from east to west. This suggests that the folding doors could have been on the first floor. If there is a similar lintel on the second floor it cannot be seen.

By the way, the outside steps were added before the fire – probably in 1935.

From the Portsmouth Times
Monday April 23, 1945

Arson Blamed in School Fire

*Otway Grade Building Destroyed:
Adjoining Structure Damaged*

Incendiarism was suspected in a fire which destroyed Otway grade school and damaged the high school building about 7 am Sunday.

Brush Creek Township school board will meet tonight to determine whether to dismiss school for the balance of the term or arrange for temporary quarters for the remaining school weeks.

A. B. Jones Supervising Principal of the schools estimated loss at \$30,000, including \$25,000 on the building and \$5,000 on contents. The loss was partially covered by insurance.

A suspect was apprehended Sunday Afternoon by county officers and is being held for questioning. Sheriff Earl C. Brandel said the man appears to mentally ill.

Mr. Jones said today he is certain the fire was set because it started in a second floor room where *there was evidence of the* logical cause of the fire.

Custodian Herbert Koenig told officials the furnace *fire was out on Friday night and that the electrical current was turned off at the cabinet.*

***Flames gutted the sub-floor of the* grade school, causing the roof to collapse and weakening the brick walls. Walls were pulled down Sunday as a safety measure.**

Built in 1916 the grade school contained six rooms and was two stories high. Later the high school was built in the rear of the grade school and three years ago another building was built.

Nothing was salvaged from the building. All the grade school textbooks, pupils and teachers personal belongings and desks were destroyed.

Eli (Dutch) Gordley, who lives nearby, discovered the fire about 7 a.m. when he started to the barn to milk. Mr. Gordley spread the alarm, calling Otway volunteer firemen and Lucasville volunteer department .

Mr. Gordley noticed smoke issuing from the school. Teacher C. E. Eulett was the first to reach the building and reported the rooms were filled with smoke accumulated from a small smoldering blaze in a second floor room. He said there appeared to be small blaze but smoke was so dense it was impossible to fight the fire.

Mr. Jones was at Friendship when the fire was discovered and arrived in Otway in time to aid the firefighters

About 180 to 200 pupils attended the elementary school and 150 attend high school. The school employs 13 teachers.

Deputy Sheriffs C. R. Barns and Elza Kallner and William Addis, deputy state fire marshal, commenced an investigation of the fire Sunday afternoon and took the suspect into custody for questioning.

Three years ago?

*The previous news clip says “ **three years ago another building was built**”.*

The one-room schools closed in 1935.

The students had to go somewhere.

They went to the 1935 WPA addition.

I think the line about three years ago is wrong.

It should have said ten years ago.

From the Portsmouth Times
Tuesday April 24, 1945

**Otway School Reopening Set
Grades to use Auditorium, nearby Church**

School will be resumed in Otway Wednesday and Thursday as officials continue their investigation to determine the cause of a fire which destroyed the Otway grade school building Sunday Morning.

High school classes will resume schedules in their usual classrooms Wednesday morning.

Grade school classes will resume Thursday morning. Some of the grade school classes will meet in the high school auditorium - the balance will meet in a church.

Details of the grade school classes are to be worked out today.

The emergency classrooms will be used until May 18 when the current school term closes.

All rural schools took inventory of their textbooks today in a countywide drive to collect text books for use by the Otway school. County Superintendent N.B. Potts called a meeting of rural high school principals for this afternoon to discuss school book aid for Otway.

Mr. Potts attended a special meeting of Brush Creek Township School Board Monday night and along with Supervising Principal A.B. Jones assisted in working out temporary quarters for the school.

Temporary quarters will be needed for next school year, the board expressing belief that the building cannot be replaced until after the war because of the need of critical materials.

County officers added a new clue to the probe today. A resident of Otway turned over to officials two suit cases found along route 73 Sunday morning. Finding of the luggage suggested the possibility that travelers spent the night in the school, started a fire in a waste can and hurriedly left when the flames spread.

Fire loss was estimated at \$30,000 and insurance coverage was about \$10,000

Edith Koenig Montavon

*That' s right. They had school
at the Church and Mayor' s
Office/Town Hall/Fire House the
next year ' till the school
opened.*

Jim Arnold

*I was in the third grade when it burned.
I graduated in 1954. It burned in 1945.
Only the front of the building burned.
High School continued in the back.*

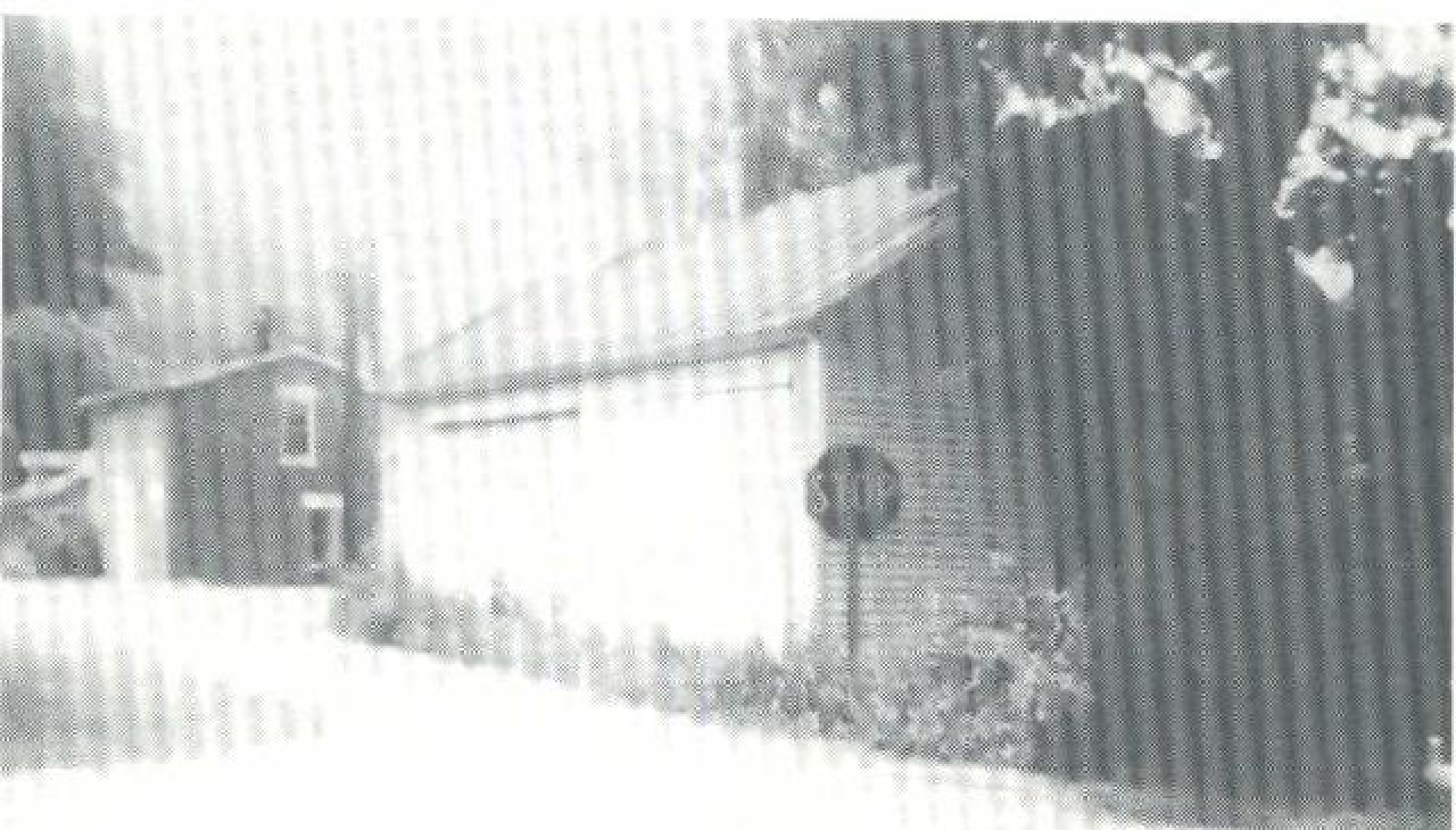
*The grade school children had classes
in the basement of the Methodist
Church and in the Town Hall.*

Rose Ann Joyce

It burned in 1945.

I was a sophomore.

*I walked up to the Methodist
Church and taught the third grade
until school was out for the
summer.*



**The Otway Mayor's Office – Town Hall – Fire Station.
You are standing on the ramp at the Villager.
At the corner of SR 73 & 348.
Between the road and Bloody Run.
Bill Platzer remembers music classes here.**

Bob Clark

- 1-2-3 at the Methodist Church**
- 4 In the Christian Union (Basement)**
- 5 in the Town Hall (Mayor's Office)**

Ralph Kratzer

**I was in the fifth grade
I went to school in the Town Hall.**

1956 Redbird

**We (the first grade class of 1944-45)
were forced to spend the rest of the year in the
Christian Union Basement.**

Mrs. Riley was the teacher.

**Second Grade Mrs. McCollister (Eva Honaker)
in the Sunday School room of the Methodist Church.
Third Grade in the basement of the Methodist Church
with Mrs. Mains.**

**Fourth Grade in a new room at the new building.
Mrs. Kuhner.**

1957 Redbird

**First Grade in the Methodist Church
Mrs. Riley**

**Second Grade Methodist Church
Mrs. McCollister (Honaker)**

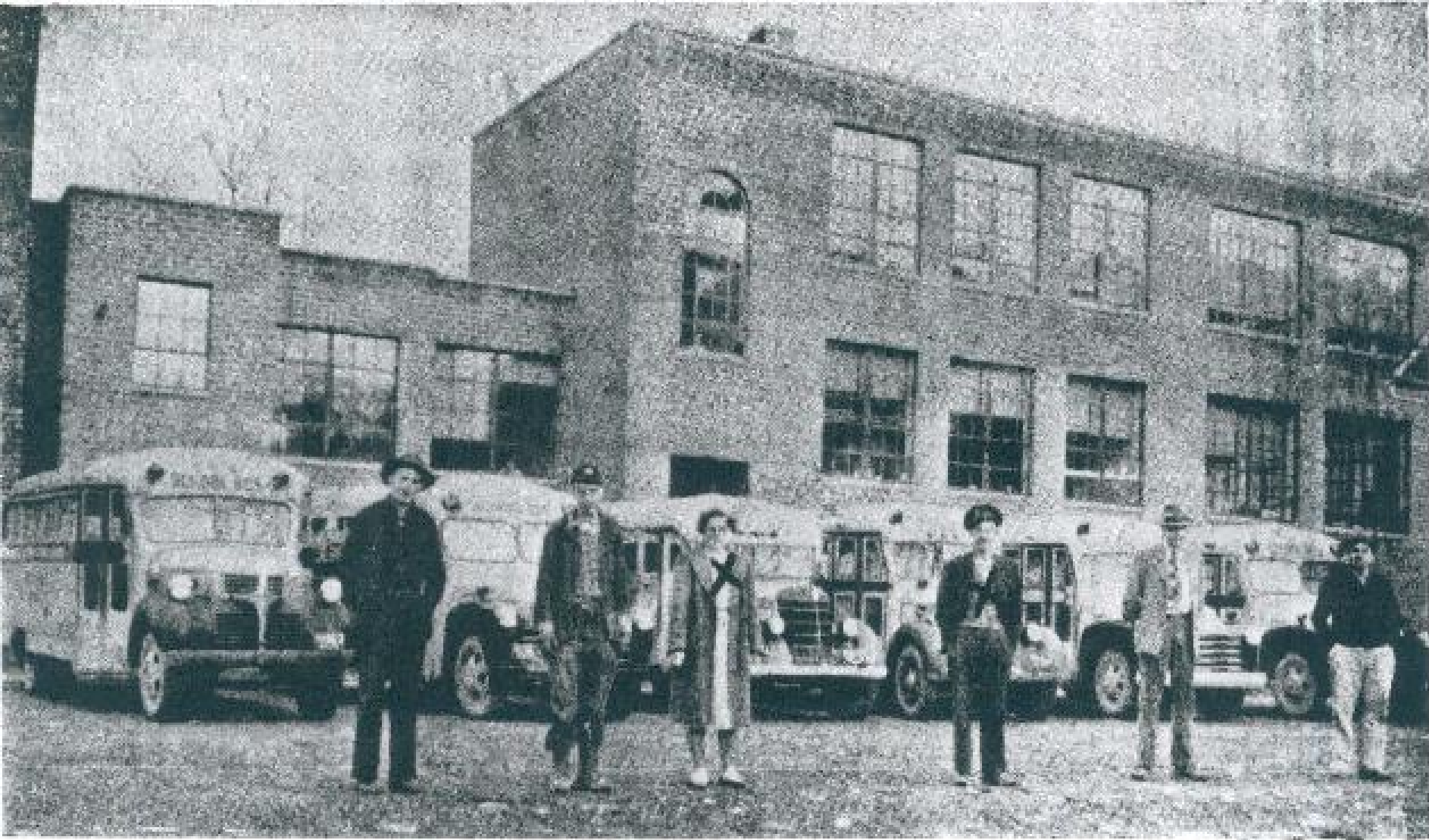
1958 Redbird

**First Grade in the Methodist Church
with Mrs. Riley.**

**In the Fifth grade
Music classes were started
in the Town House**



**The Mayor's office was where the SUV is in the picture.
The road was much narrower and maybe 20 feet closer.**



Kack Brewer, Bob Hoople, Edna Evans, Rosco Seaman, Chester Wolford,
Arthur Hill.

From the 1950 Otway Annual

Dates

The Good Friday Fire was April 21, 1916

The second fire was April 22, 1945

**From the 1951 Otway Annual.
We are in the parking lot of the
Christian Union Church.
Notice the Gym.
It runs parallel to the Road.**



Left to Right- J. Brewer, H. Evans, B Hoople, C. Wolford, R. Seaman
A. Hill, P. Hacker,



Old Gym Inside

This is a picture of the old gym from the 1951 yearbook. The floor ran parallel to the railroad tracks. The stage was on the east (CU) end. The operetta is Aunt Drusilla's garden. Norvel Davis says that Brant Henry built an extension to the stage. That's why the children are standing on the same level beyond the curtains.



**The brick part is 1935.
The block part is 1957.**

Old Gym Stories

I played ball in “the shoebox” for one year and am proud of it.
The center circle overlapped the foul circle by about a foot.
Visitors who relied on long shots were usually unsuccessful
because the ceiling was so low their
shots would hit the ceiling which was out-of-bounds.

Carl Koenig

Six inch overlap of the basketball circles.

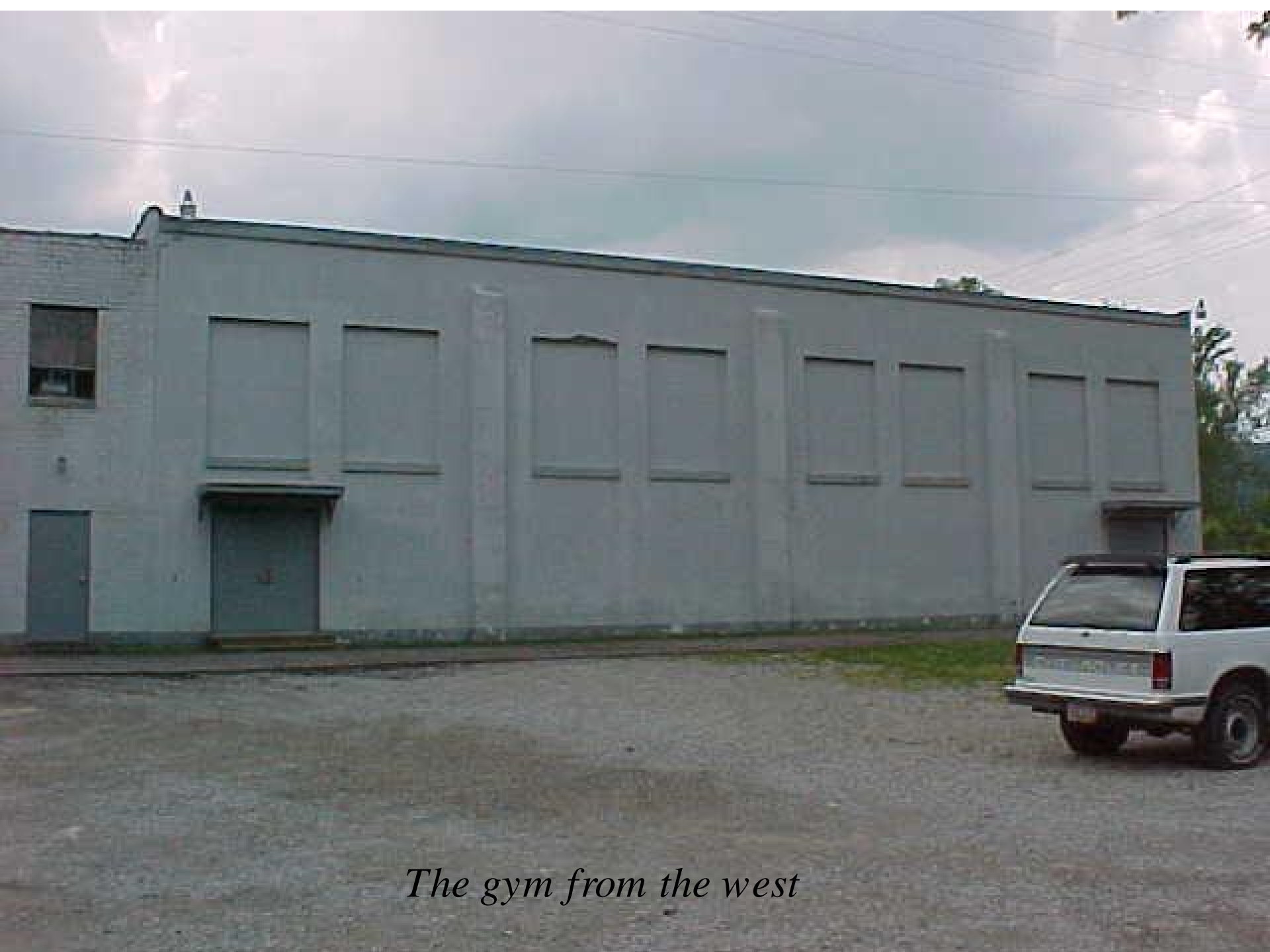
Norvel Davis.

Raymond Fitzpatrick (from Rarden)
hit the ceiling three or four times in one game

Jim Arnold



DEC 24 2007



The gym from the west



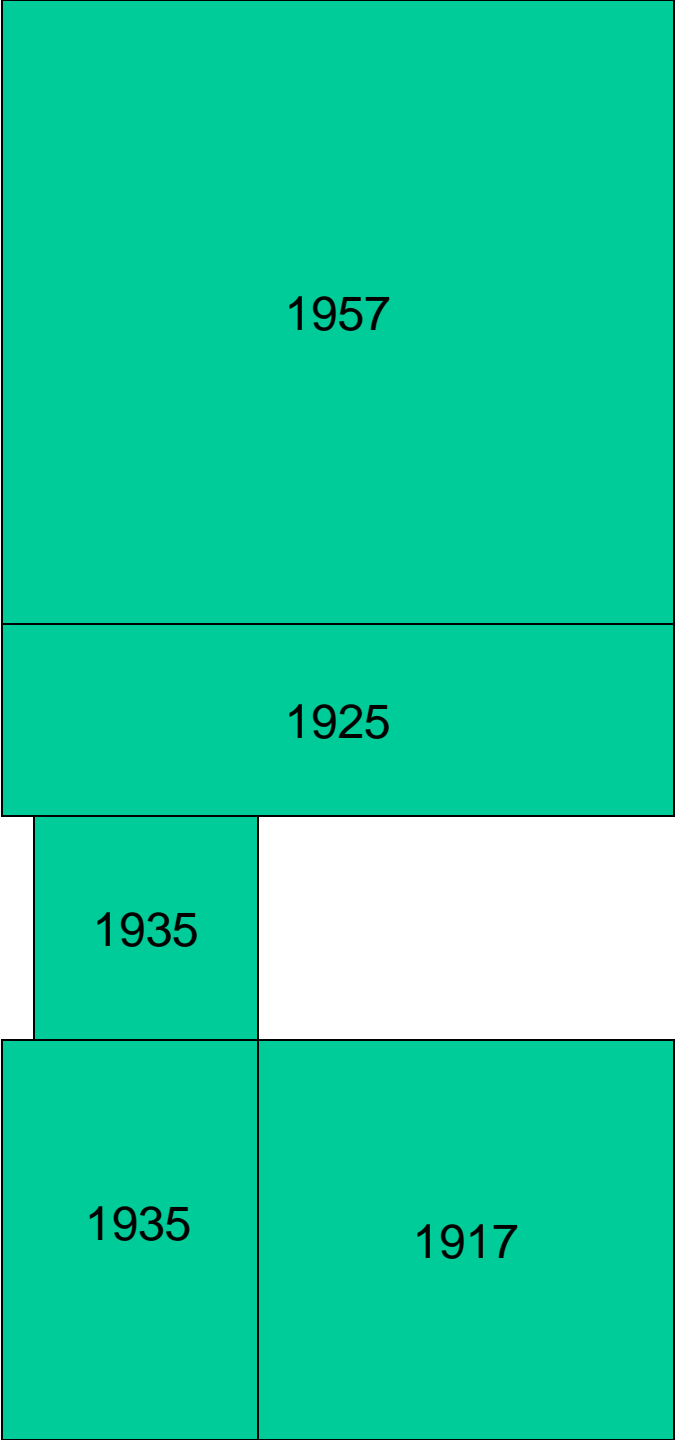
The kitchen and stage from the east



Stage



May 28, 2002



- *Maybe the connecting hallway was built in 1941- that makes the newspaper article correct. SR 349 was built over Low-Gap hill by the WPA. They may have built this addition too.*

History Highlights

The three floor front was built after the 1916 fire.

Opened in 1918. Clyde DeLong first graduate.

More space was needed so a new high school was built – six rooms and the old gym. Opened in the Fall of 1925.

This was not connected to the 1917 building.

Even today these two areas have separate heating systems.

In 1935 the WPA built the six windows on the left of the 1917 building which connected 1917 to 1925.

This closed all the one-room schools.

The kitchen, stage and new gym in 1957.

Northwest opened in 1958. Otway High School closed.

Otway became elementary only which closed in 1995.



From the Christian Union parking lot-back of the school.
Consider the course of brick just above this box.
On the left the bricks are end – whole – end.
On the right the bricks are end – end – end.
They were laid at different times.
The left is 1925 (the offices)
The right is 1935 (the staircase)



In the front of the school.

From the Christian Union driveway.

The courses of bricks don't match.

Built at different times.

The right is the 1917 building.

The left is the 1935 building.

The Otway Room

Georgia Furr has established a memorabilia room in the Otway building. It's in Gladys Riley's room. Cleo Ralstin has donated a desk. The Arnold's have contributed pictures of their family. Class pictures from 1948 to 1959 are on display. Go see it. Call Georgia. The following picture of District #1 (Youngs – Dry Run) is there.



Composites

**These Composites
are also in the
Otway Room.**



Nellie Burnett



Charles Adams



June Ponn



Bruce L. Vogel



Mary Evelyn Euton

Otway High School

Class of 1948



Jerry Wolford



Norman Campbell



J. L. Williams



Ray Everett



Mary Ellen Hunter



Elizabeth Graham



Dorothy Hixon



C. A. Lusk



Mary Louise



Margaret Anne Perkins



Martha Cooper



Anna Louise Chappell



Mary Ellen Joyce



Roberta Ethel Taylor



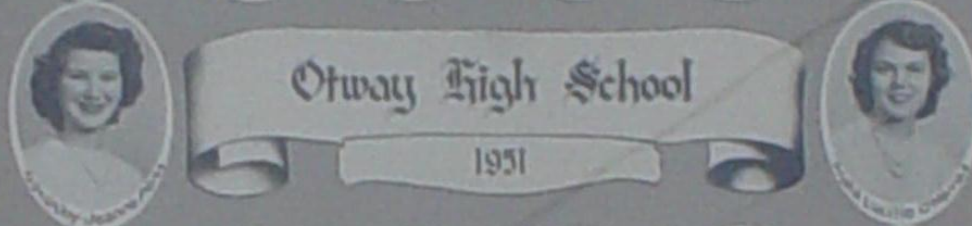
Linda Price





Otway High School
Class of 1950





Otway High School

1951





Ohway High School

Class of 1952



Printed by Morning



Martha Marie Hughes



John Arthur Fontana



Rose Robinson



Ruth Pearl Aulick



Robert Lloyd Day



Jean Robinson



Laverne Ruth Cunniff

Otway High School

1953



Anne Marie Fisher



Carrol Leroy Spaulding



Linda Lyvonne Sanders



Linda DeWitt



Thomas Calkins



Sandra Jane Tappin



Ralph B. Spence



Sheila Ann Bush



James E. Wainwright



Norma Ruth Young



Charles Lee Cook



Kenneth John Brown



Fred Phillip Lind



David L. Harris



Thomas J. Lynn



Marty G. Wainwright



Charles A. Fennell



Thomas Webb



Arthur E. Lewis



James A. Young



Frank Taylor



William B. Harty

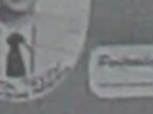
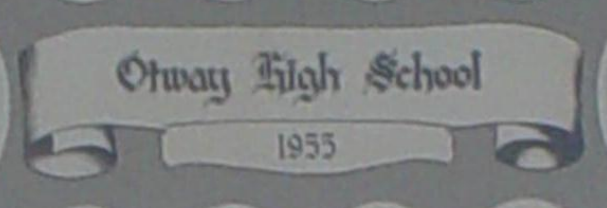


Gerald L. Miller



Otway High School 1954





Compiled by Marjorie



Olway High School
1956





Jerry Scamphorn



Nora Moore



Jack Campbell



Patsy Estman



Arlen Holm



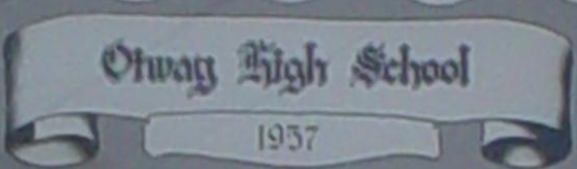
Rosemary Coover



Harry Eichmann



Lloyd Gambrell



George Brown



Dorothy Saly



Betty Hill



Philip Collins



Joyce Hoke



Lawrence Stone



Judy Thyer



Faylida Thompson



Fred Hansen



Geraldine Eaton



Gary Inghel



Judy Krenn



Jerry Jones



Virginia Brown



Larry McCaslane



Judy Elmore



Wendel Smith



Dick Phipps



Raymond Brown



Thelma Lynn



William B. Boyd



Stanley Anderson



William Chapman



James Schuchman



Betty Smith



Noble Williams



Mary Williams

Portraits by Manning



Kenneth Smith



Joyce Smith



James O'Neil



Onway High School 1958



Thanks For Watching!

*If you have a comment, correction or something to
add, contact Jake Orlett*

at 740.259.5747

Or

jakeorlett@peoplepc.com

Or

jorlett@northwest.k12.oh.us